

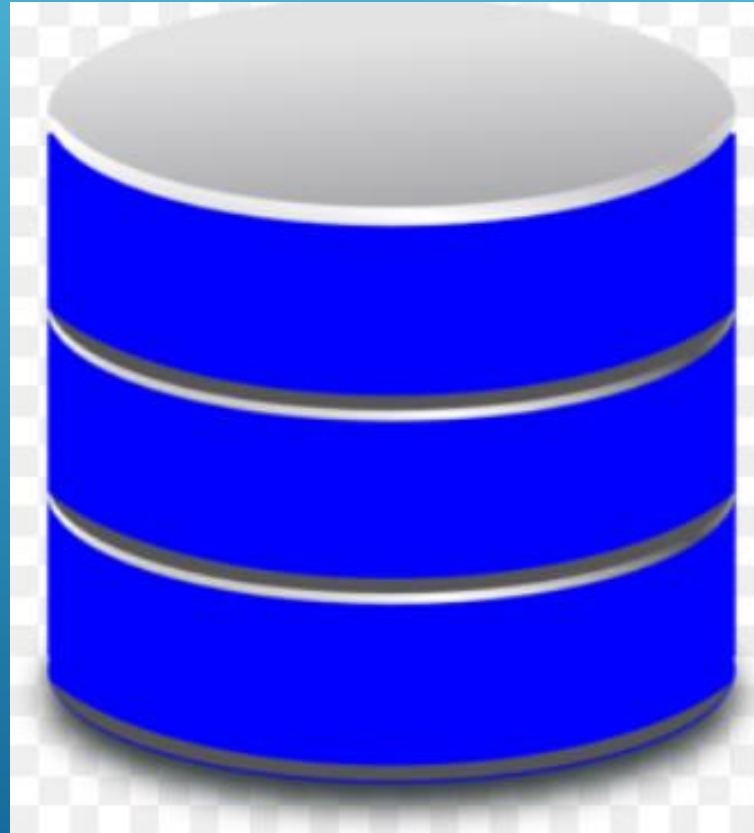
BACKUP OF MORPHO MANAGER DATABASE



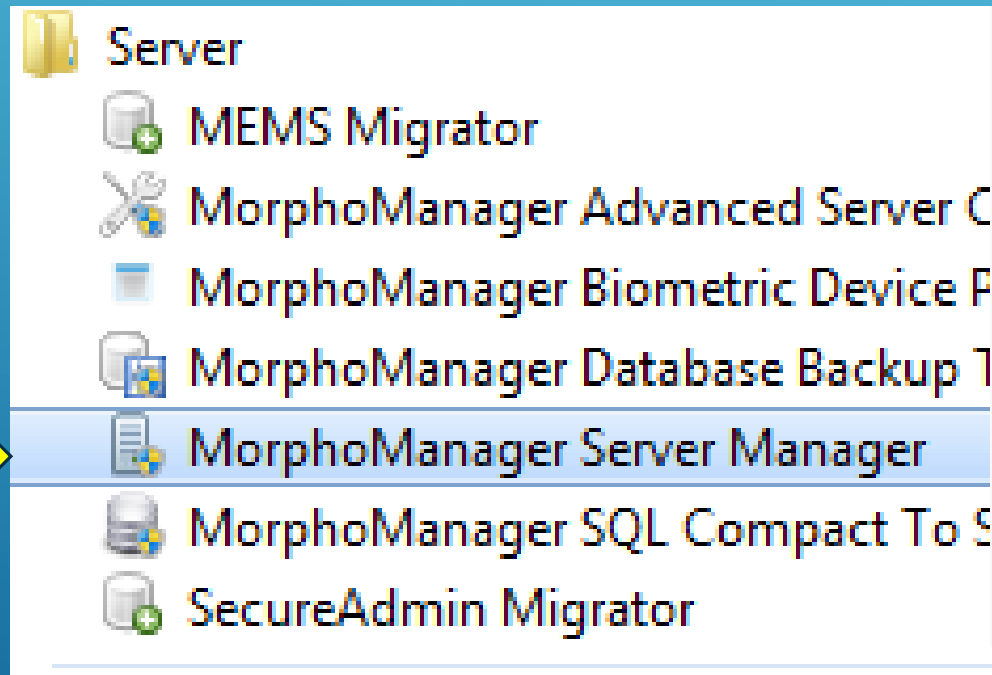
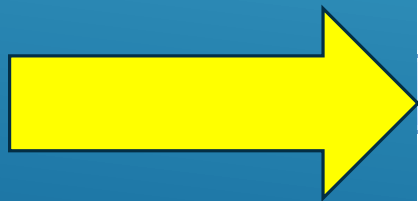
THERE ARE TWO DATABASES
MORPHOMANAGER CAN WORK WITH

COMPACT EDITION OR EXPRESS EDITION

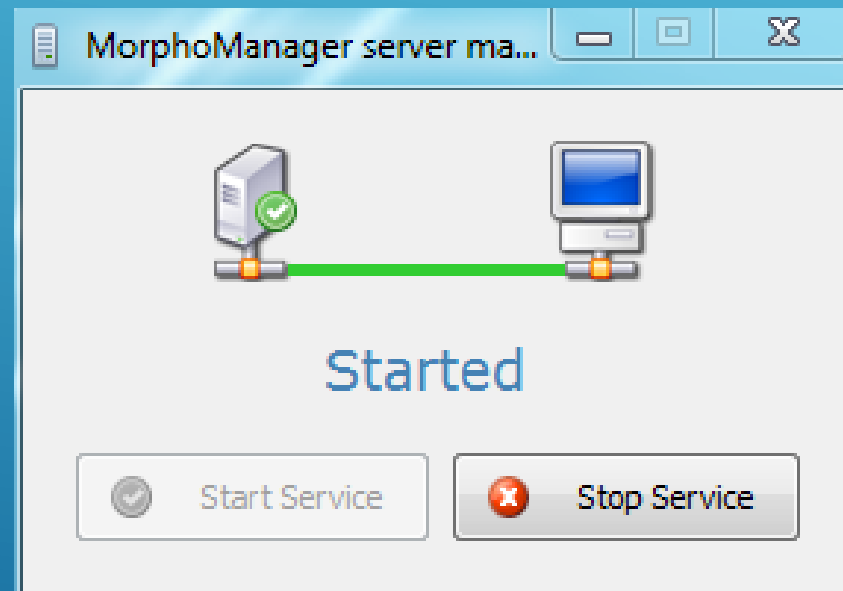
BACKUP OF COMPACT EDITION



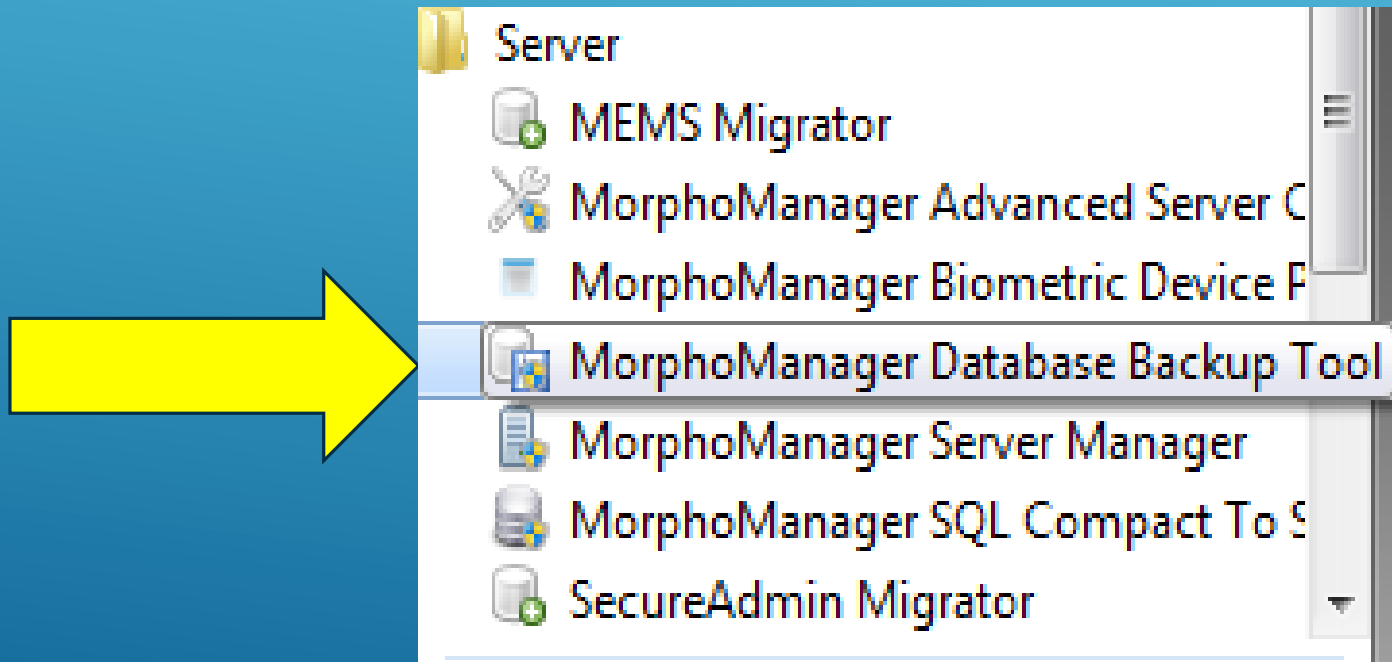
NAVIGATE TO MORPHOMANAGER SERVER MANAGER



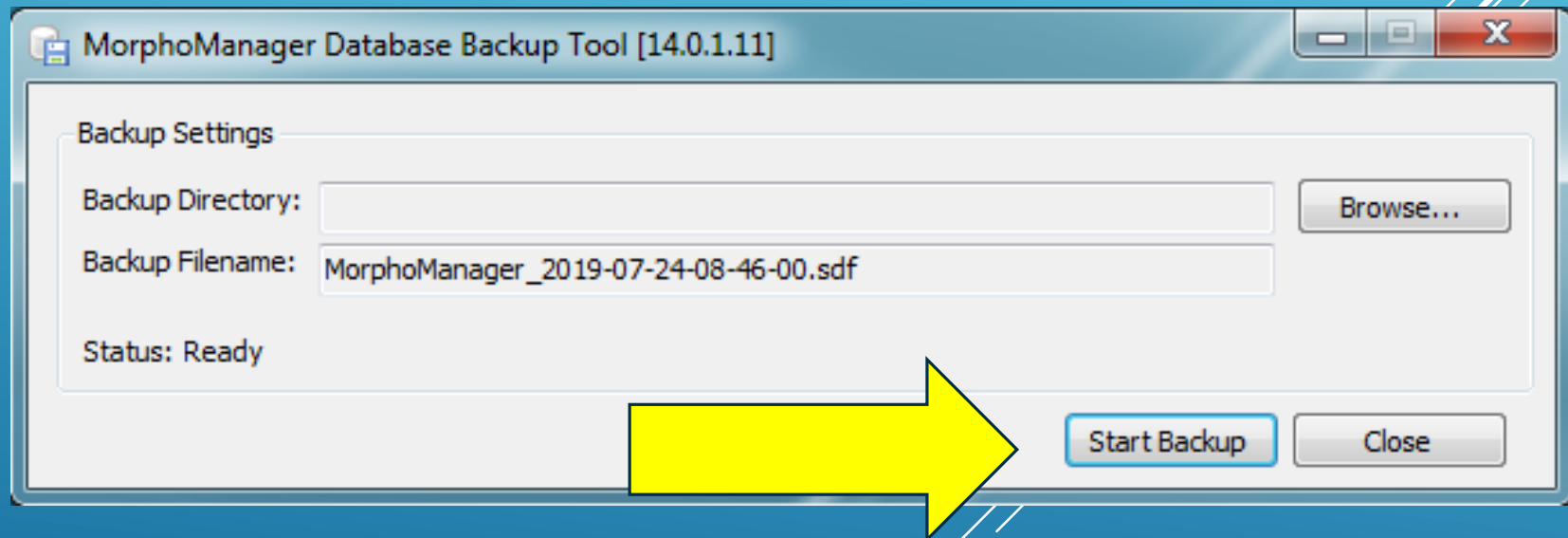
STOP MORPHO MANAGER SERVER



NAVIGATE TO MORPHOMANAGER DATABASE BACKUP TOOL



START BACKUP



BACKUP OF EXPRESS EDITION

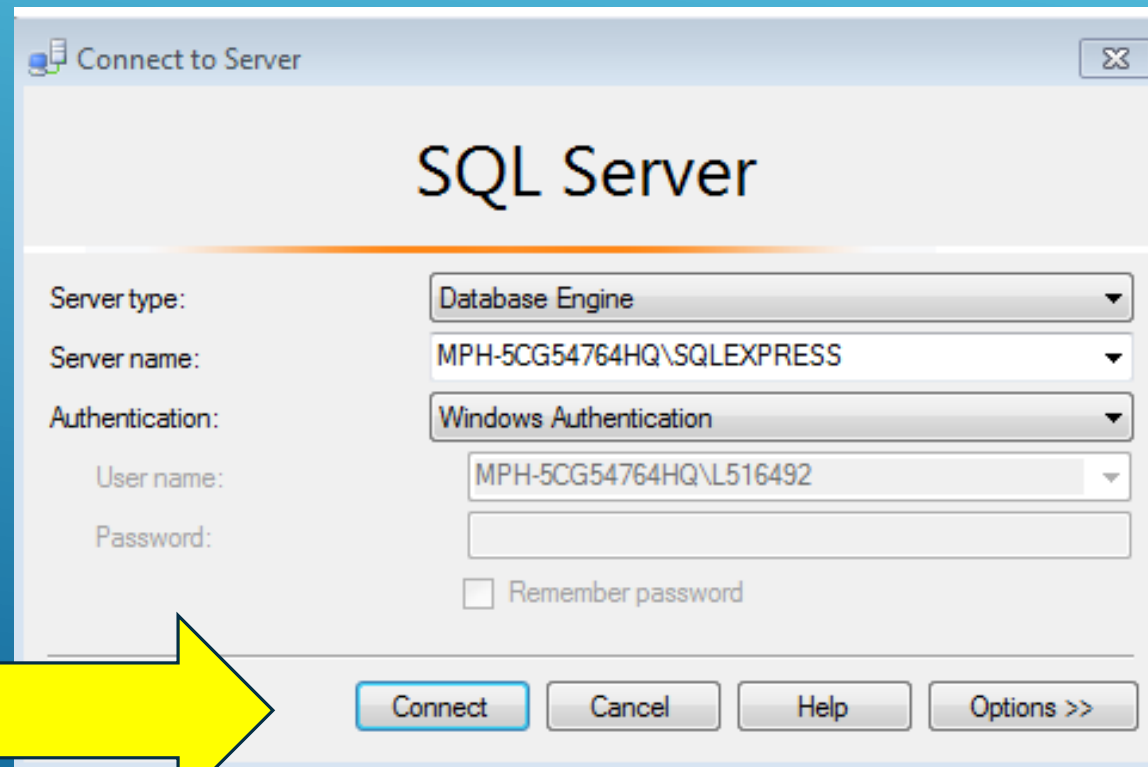


IMPORTANT

PLEASE CONSULT WITH A DBA FOR THE NEXT PAGES ARE JUST AN EXAMPLE
ON HOW TO DO A BACKUP

IDEMIA IS NOT RESPONSIBLE FOR THE BACKUP OF YOUR OWN DATABASE

LOG IN THE SQL SERVER



Connect to Server

SQL Server

Server type: Database Engine

Server name: MPH-5CG54764HQ\SQLEXPRESS

Authentication: Windows Authentication

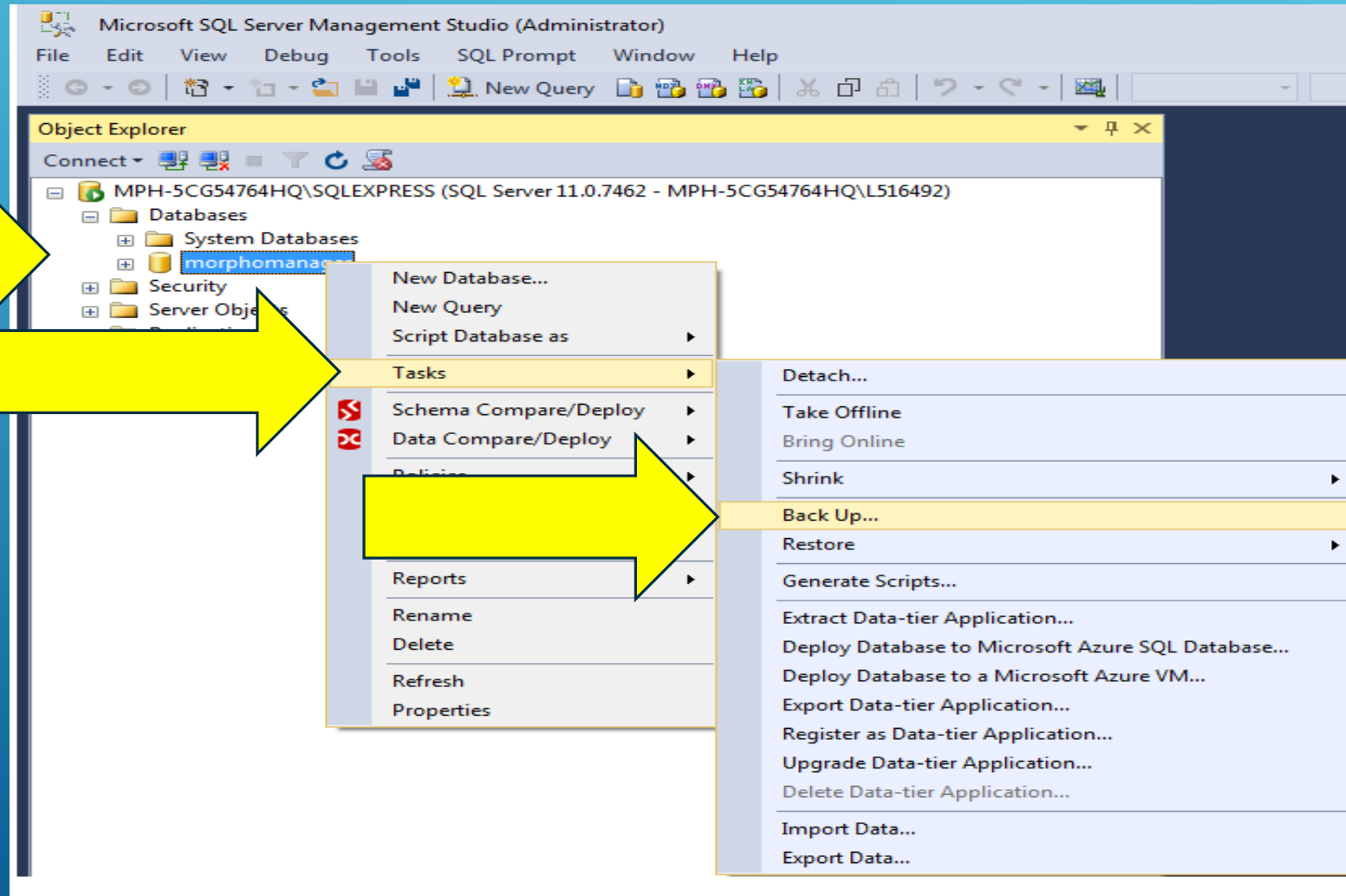
User name: MPH-5CG54764HQ\L516492

Password:

Remember password

Connect Cancel Help Options >>

FIND THE MORPHOMANAGER DATABASE RIGHT CLICK>TASK>BACKUP



WEBSITE

Please visit our website,
service.morphotrak.com for
software, firmware, videos and
PDF'S