

HOW TO USE FINGER ON THE FLY



FINGER ON THE FLY=FOTF

****IMPORTANT****

THIS IS NOT A READER

ITS SOLE FUNCTION IS TO CAPTURE HANDS

IT IS NOT USED AS AN ACCESS POINT DEVICE

IT DOES NOT SEND WIEGAND

THE FOLLOWING PAGES EXPLAIN
HOW TO USE THE FOTF WITH MORPHO
MANAGER

A decorative graphic consisting of several parallel white lines of varying thicknesses, slanted diagonally from the bottom-left towards the top-right, crossing the text area.

MORPHOMANAGER DEFAULT LOG IN

USERNAME-ADMINISTRATOR

PASSWORD-PASSWORD

USER POLICY



Path Administration>User Policy

Create new User Policy

Select the User Policy that this user will belong to. This is an important selection, as the policy will determine Biometric Device access and other access control and time & attendance settings.

USER POLICY

CREATE A NEW USER POLICY

- Operator
- Key Policy
- Biometric Device Profile
- Biometric Device
- Wiegand Profiles
- User Policy**
- Access Schedules
- User Distribution Group
- User Authentication Mode

Enter the details for this User Policy

Name: Wave Enrollment

Description:

Access Mode: All Biometric Devices and Clients

Allow MA 500 database selection during user enrollment

Access Schedule: 24 hours, 7 days a week

Extended User Details: Display extended user details

Wiegand Profile: Standard 26 bit

User Authentication Mode: Biometric (1:Many)

Show Photo Capture Page:

Next

WIEGAND PROFILE WHAT WILL BE SENT TO YOUR ACP
USER AUTHENTICATION MODE IS BIOMETRIC (1:MANY)

USER POLICY

CLICK NONE FOR FINGER BIOMETRICS

Enter the details for finger biometric options

Finger Biometric Enrollment Minimum Fingers:

None

Preferred Finger One:

Left Index Finger

Preferred Finger Two:

Right Index Finger

Preferred Duress Finger:

Left Middle Finger

Vein / Print Mode:

Universal Fast



It is recommended the mode set in User Policy for enrollment should be the same mode or a more restrictive mode than the mode set in Biometric Device Profile. Using a less restrictive mode in User Policy than in Biometric Device Profile is likely to increase the False Rejection Rate (FRR) of biometric devices.

Next



USER POLICY

CLICK TWO FOR WAVE ENROLLMENTS

Enter the details for wave biometric options

Wave Enrollment Minimum Hands:

Two

Show Wave Biometric Capture Page:



Finish



ENROLLMENT PROCESS


USER MANAGEMENT




User Management

Users are people who will have their biometric data sent to the selected Biometric Device for identification purposes for either access control or time and attendance.

USER MANAGEMENT

 Home

 Administration

 User Management

CREATE A NEW USER WITH THE USER POLICY CREATED EARLIER

Enter details for this User

User Policy:

Wave Enrollment

Enabled:



First Name:

John

Middle Name:

|

Last Name:

Smith

Date of Birth:

Use M/d/yyyy eg. 3/24/1986.

Next




USER MANAGEMENT

MANUALLY TYPE IN USER NUMBER

Wiegand Values

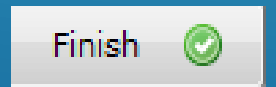
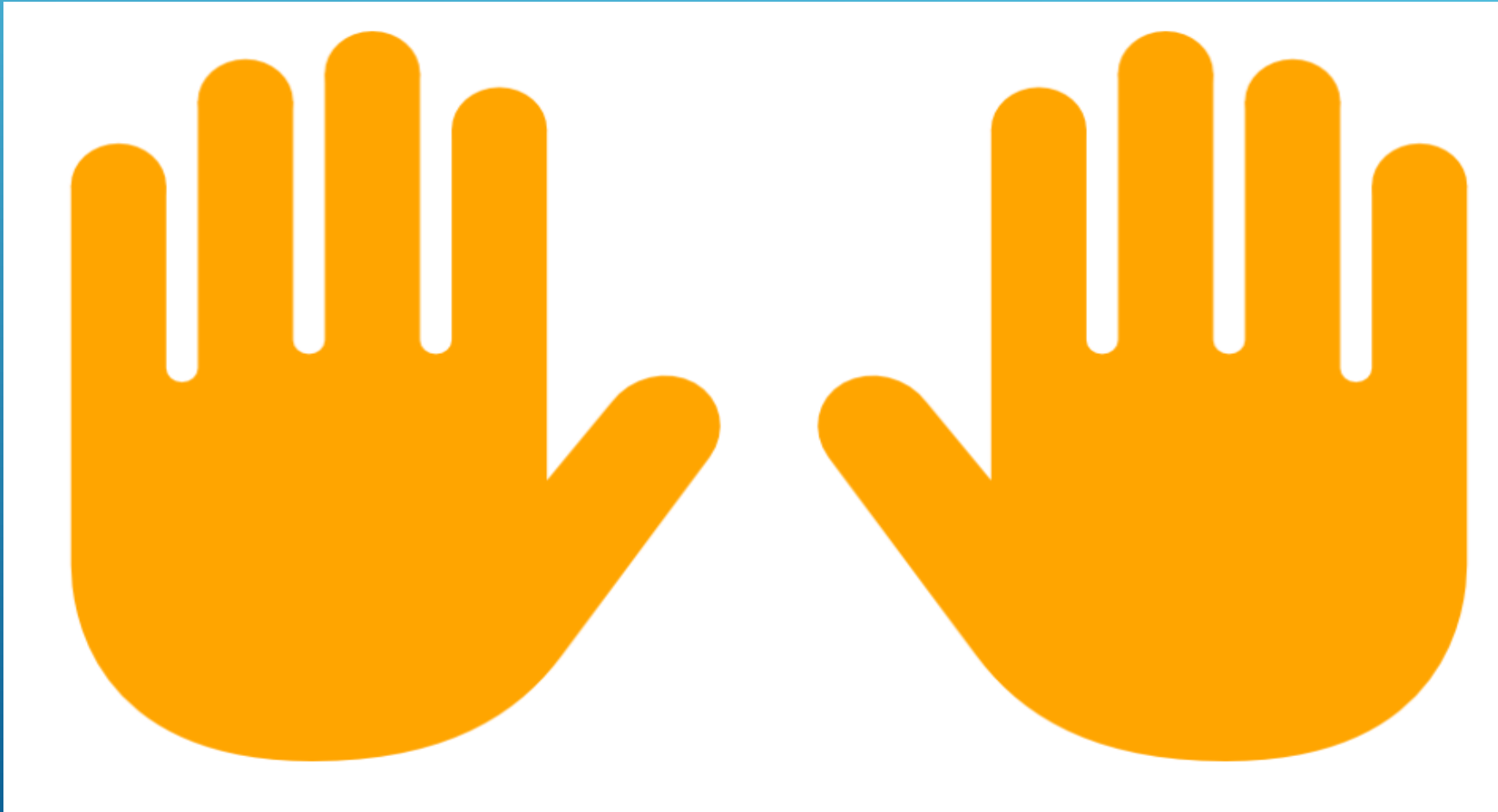
User



Next 

USER MANAGEMENT

CLICK ON THE FLASHING HANDS TO START CAPTURING



FINAL RESOLUTION

ONE USER POLICY NEED TO BE CREATED TO CAPTURE HAND PRINTS WITH THE FOTF

TROUBLESHOOTING

BLUE USB CABLE MUST BE CONNECTED TO USB 3 ON YOUR PC

Sensor –Rear View with Cover Removed



TROUBLESHOOTING

FOTF NEEDS TO HAVE SEPARATE POWER CONNECTED



TROUBLESHOOTING

LICENSE DONGLE NEEDS TO BE PLUG IN TO PC BUT DOES NOT HAVE TO BE USB 3
LICENSE DONGLE SHOULD CONTAIN LIBFOTF AND VERIF (EXAMPLE BELOW)




Morpho License Manager

Installed License

LIBFOTF;VERIF;WSQ;MEMS;MORPHOPAK;MACI

Details ...

- [-] MORPHO DONGLE
 - Serial: 0000000001382541
 - License: LIBFOTF;VERIF
- [-] MSO
 - Serial: 251946674-1213S017434
 - License: WSQ;MEMS;MORPHOPAK;VERIF;MACI
- [-] SOFTWARE LICENSE
 - Serial: 2010-*1K8RVVSGXTKPUDJ
 - License: [No license available]

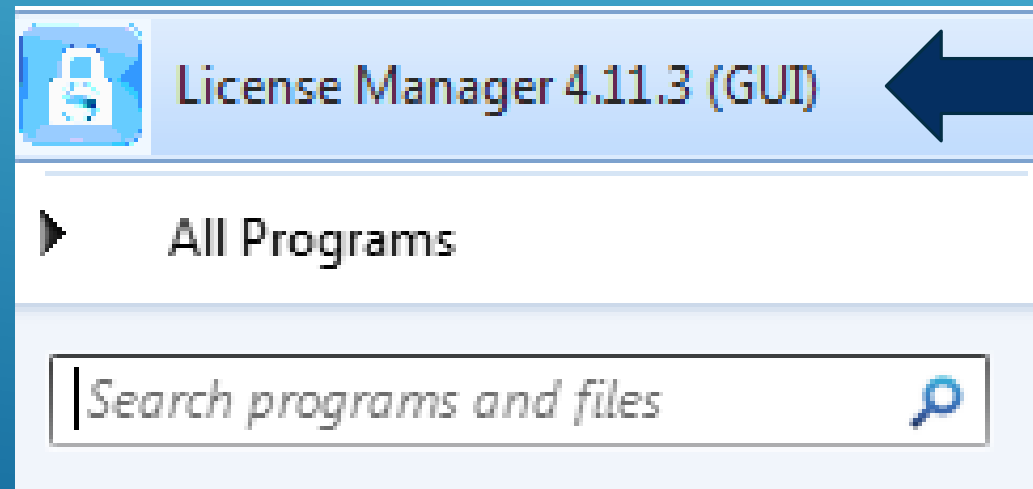


TROUBLESHOOTING

HOW TO CHECK LICENSE ON DONGLE

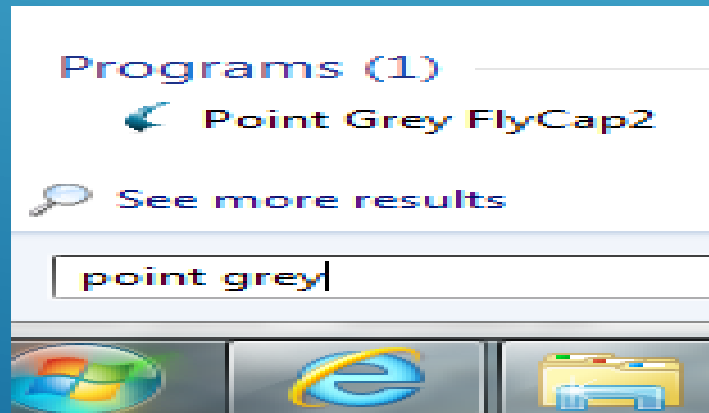
WHEN YOU INSTALL MORPHO MANAGER SOFTWARE IT AUTOMATICALLY INSTALLS MORPHO LICENSE MANAGER

RUN THE GUI AND CHECK YOUR DONGLE

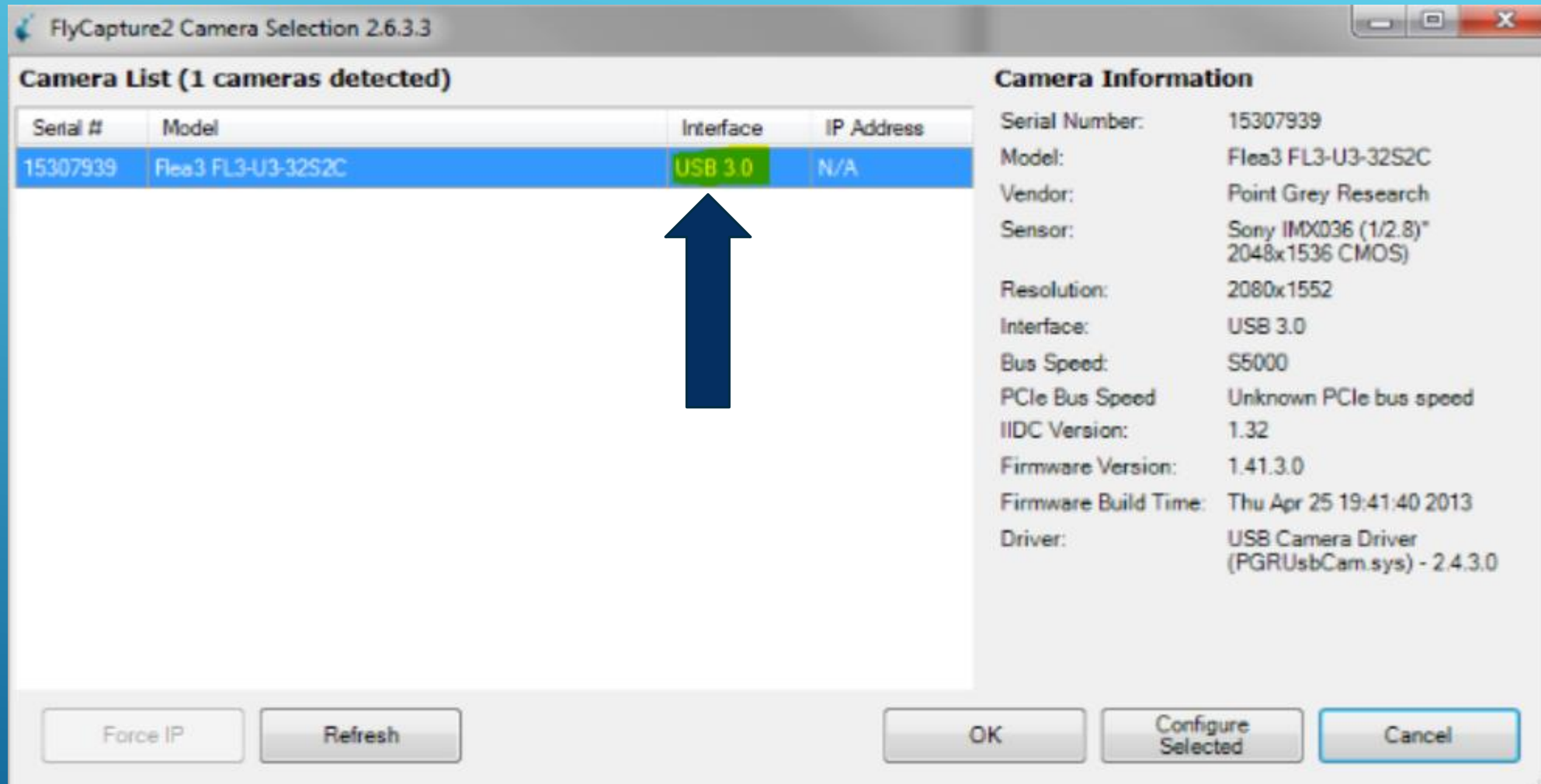


TROUBLESHOOTING

SEARCH FOR POINT GREY FLY CAP2 WHICH IS AUTOMATICALLY INSTALLED WHEN INSTALLING MORPHO MANAGER SOFTWARE



TROUBLESHOOTING



CONNECT MW DESKTOP AND DONGLE. WINDOWS SHOULD LOOK LIKE THIS

TROUBLESHOOTING

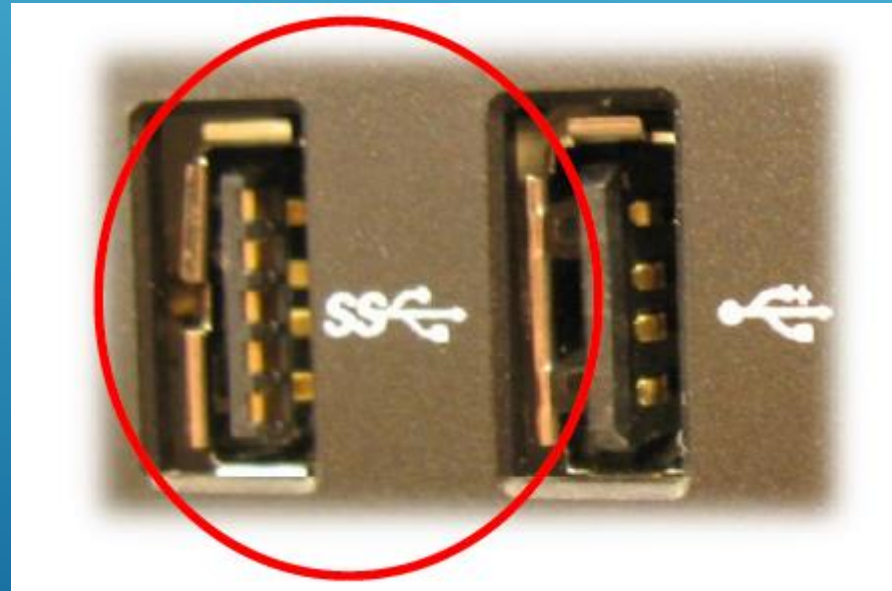
USB DONGLE IS RECOGNIZED AS A SMART CARD READER, NOT AS A MEMORY STICK



IF IT IS RECOGNIZED IN DEVICE MANAGER BUT THERE IS NO LICENSE IN LICENSE MANAGER, THEN IT MEANS THAT THE DONGLE IS WORKING FINE BUT THE INTERNAL SMART CARD CANNOT BE READ. THIS COULD HAPPEN IF THE CARD IS NOT PROPERLY INSERTED. IT SHOULD LOOK LIKE THIS

TROUBLESHOOTING

MAKE SURE THAT THE USB 3 IS NOT BEING BLOCKED OR UNAVAILABLE



MINIMUM PC CONFIGURATION

Component (HW or SW)	Typical Recommended Values
Processor	Intel i5 or i7 with 4 physical cores & SSE4.1 instruction compatibility running at least at 2 GHz (minimum). Recommended 3GHz or higher. For example: 3 rd generation Intel Core i5-3470 or i7-4765T
RAM	DDR 3.0 with at least 4 Go running at 1600 MHz
USB	USB 3.0 at least <u>with Intel chipset</u> For example: Intel 7 Series/C216 or Intel 8 Series/C220
USB 3 driver	Generally speaking, Morpho recommends using the latest available driver coming from the chipset vendor. For ex.: Intel(R) USB 3.0 eXtensible Host Controller: 1.0.10.255 or 2.5.1.28
Operating System	Windows 7, 32 bits or 64 bits

WEBSITE

Please visit our website,
service.morphotrak.com for
software, firmware, videos and
PDF'S