

Enroll with Smart cards in Morpho Manager

Omnikey 5021 CL

You need a Omnikey ,a 5021 CL is recommended

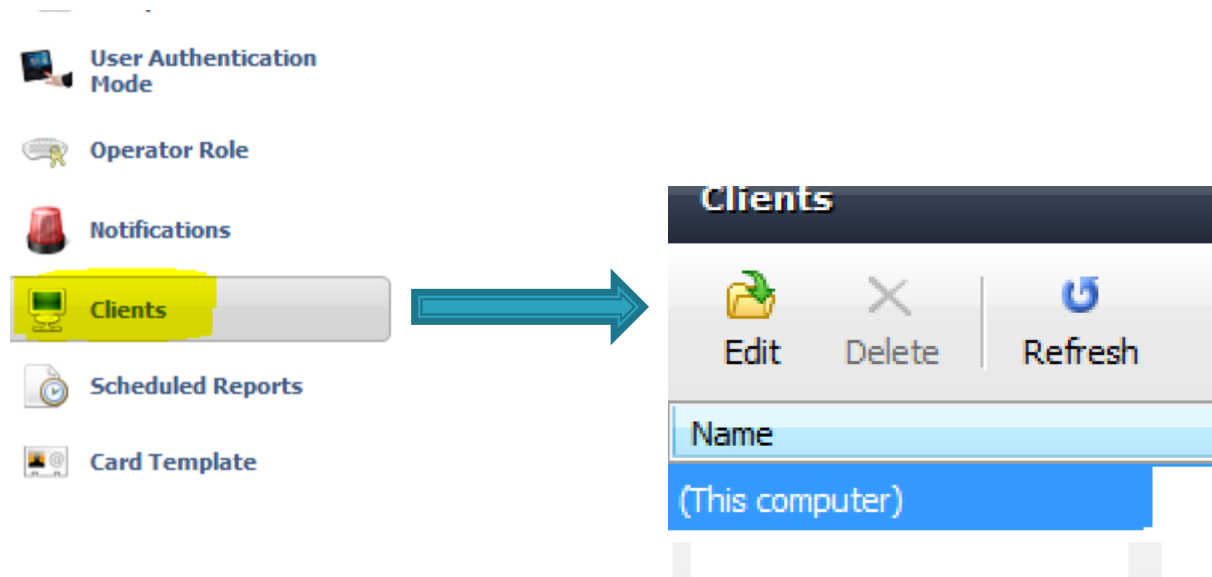
You would need a MSO to capture fingerprint enrollments

You could use *one access reader to capture fingerprints if you did not have a MSO (*only Sigma products)




Morpho Manager Client



- ▶ In Morpho Manager Go to Client>click This computer and Edit



Morpho Manager Client continues

- ▶ Click next till you get to Enrollment Devices
- ▶ Change Morpho Smartcard Encoding to Selected PC/SC Smartcard reader
- ▶ Change Morpho Smartcard encoding PC/SC to the Omnikey
- ▶ Click Finish

Enrollment Devices 

Morpho 3D Face enrollment:	<input type="text" value="None"/>	
Morpho 3D Face enrollment biometric device:	<input type="text"/>	<input type="button" value="Search"/>
Morpho Finger biometric enrollment:	<input type="text" value="Any MorphoSmart"/>	
Morpho Finger enrollment MorphoAccess:	<input type="text"/>	<input type="button" value="Search"/>
Morpho Smartcard encoding:	<input type="text" value="Selected PC/SC Smartcard reader"/>	
Morpho Smartcard encoding PC/SC device:	<input type="text" value="CardMan 5x21-CL OKCM00316121"/>	
Morpho Smartcard encoding MorphoAccess:	<input type="text"/>	<input type="button" value="Search"/>
Key Policy:	<input type="text" value="Default"/>	

Morpho Manager Client continues

- ▶ You could use *one access reader to capture fingerprints if you did not have a MSO (*only Sigma products)
- ▶ Change Morpho Finger biometric enrollment to Selected Morpho Access
- ▶ Change Morpho Finger enrollment MorphoAccess and Search for your device that you want to use to capture fingerprints
- ▶ Click Finish

Enrollment Devices ←

Morpho 3D Face enrollment:	None	
Morpho 3D Face enrollment biometric device:		Search
Morpho Finger biometric enrollment:	Selected MorphoAccess	
Morpho Finger enrollment MorphoAccess:	sigma lite plus	Search
Morpho Smartcard encoding:	Selected PC/SC Smartcard reader	
Morpho Smartcard encoding PC/SC device:	CardMan 5x21-CL OKCM00316121	
Morpho Smartcard encoding MorphoAccess:		Search
Key Policy:	Default	

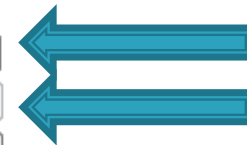
⇒

Create a User Policy

- ▶ Create a User policy
- ▶ Use the Wiegand format that is associated with your ACP
- ▶ Use Encoded smartcard + biometric 1+1 for Authentication mode

Enter the details for this User Policy

Name:	<input type="text" value="iclass and finger"/>
Description:	<input type="text"/>
Access Mode:	<input type="text" value="All Biometric Devices and Clients"/> <input type="checkbox"/> Allow MA 500 database selection during user enrollment
Time Mask Mode:	<input type="text" value="24 Hours, 7 Days a Week"/>
Extended User Details:	<input type="checkbox"/> Display extended user details
Wiegand Profile:	<input type="text" value="Standard 26 bit"/>
User Authentication Mode:	<input type="text" value="Encoded Smartcard + Biometric (1:1)"/>
Wave Enrollment Minimum Hands:	<input type="text" value="None"/>
Finger Biometric Enrollment Minimum Fingers:	<input type="text" value="Two"/>
Preferred Finger One:	<input type="text" value="Left Index Finger"/>
Preferred Finger Two:	<input type="text" value="Right Index Finger"/>
Preferred Duress Finger:	<input type="text" value="Left Middle Finger"/>
Show Photo Capture Page:	<input checked="" type="checkbox"/>
Show Wave Biometric Capture Page:	<input type="checkbox"/>
Show Finger Biometric Capture Page:	<input checked="" type="checkbox"/> (User Authentication Mode requires templates)



Create a Biometric Device Profile

- ▶ In Biometric Device Profile change the wiegand format associated with your ACP

The screenshot displays the 'Biometric Device Settings' configuration page. On the left is a navigation sidebar with various settings categories. The 'Biometric Device Profile' option is highlighted in yellow. The main content area is divided into two sections: 'General Settings' and 'Biometric Threshold Settings'. In the 'General Settings' section, the 'Wiegand Profile:' dropdown menu is set to 'Standard 26 bit' and is pointed to by a large blue arrow. Other settings in this section include 'Language:' set to 'English' and 'Key Policy:' set to 'Default'. The 'Biometric Threshold Settings' section includes 'Biometric Threshold:' set to 'Recommended', 'MorphoAccess Vein Print Mode:' set to 'Vein and Fingerprint', 'MorphoAccess Fingerprint Threshold:' set to '3', 'Morpho 3D Face Identification Threshold:' set to 'Medium', and 'Morpho 3D Face Verification Threshold:' set to 'Low'.

Setting	Value
Wiegand Profile:	Standard 26 bit
Language:	English
Key Policy:	Default
Biometric Threshold:	Recommended
MorphoAccess Vein Print Mode:	Vein and Fingerprint
MorphoAccess Fingerprint Threshold:	3
Morpho 3D Face Identification Threshold:	Medium
Morpho 3D Face Verification Threshold:	Low

Biometric Device Profile continues

- ▶ Change Multi-Factor Mode
- ▶ In this example HID Iclass if your using Iclass cards
- ▶ Click Finish

Multi-Factor Mode Settings

Multi-Factor Mode:

HID iClass

Contactless Smart Card Mode:

Device

Morpho 3D Face Multi-Factor Mode

Multi-Factor Mode:
Mode:

Biometric Only

Contactless Smart Card Mode:

Device

MorphoAccess 100, 500, J, VP Multi-Factor Mode

Morpho 3D Face Multi-Factor Mode
Mode:

HID iClass

Mode:

Biometric Only

MA SIGMA, MA SIGMA Lite, MA Sigma Lite+ Multi-Factor Modes

MorphoAccess 100, 500, J, VP Multi-Factor Mode

Biometric:



Create a User

- ▶ Go to User Management
- ▶ Use the User Policy that was created earlier

Adding User

Enter details for this User

User Policy:


First Name:

Middle Name:

Last Name:

Date of Birth:

Use M/d/yyyy eg. 3/24/1986.



Create a User continues

- ▶ The user ID has to fit within the wiegand string
- ▶ In this example 26 bit wiegand is being used
- ▶ The biggest User ID is between 1–65535

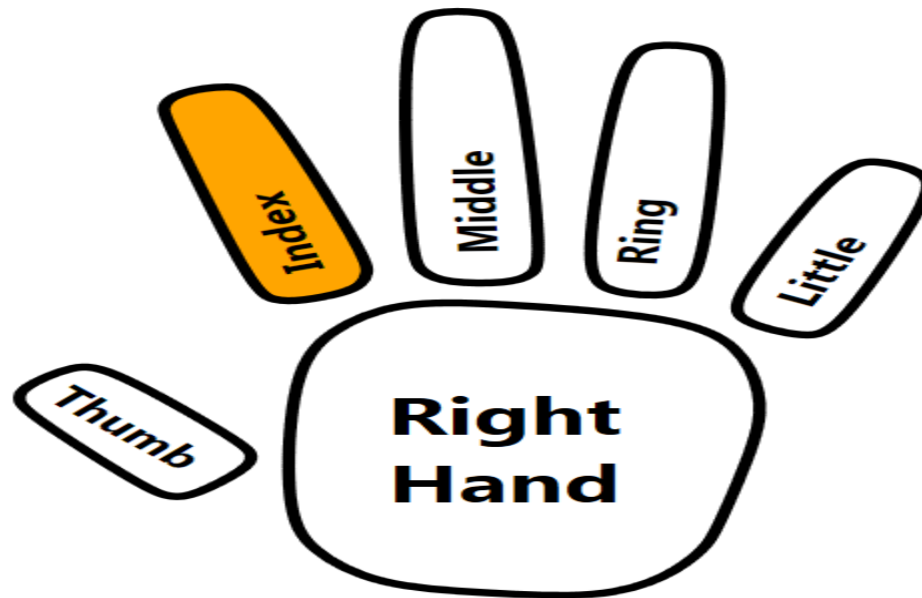
Wiegand Values

User ID

65535

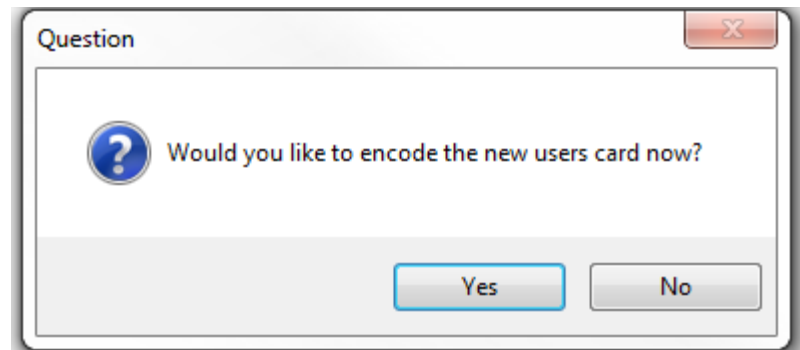
Capture your fingerprints

- ▶ Two fingers has to be enrolled using a MSO300, MSO1300, MSO VP or a Sigma Access Reader



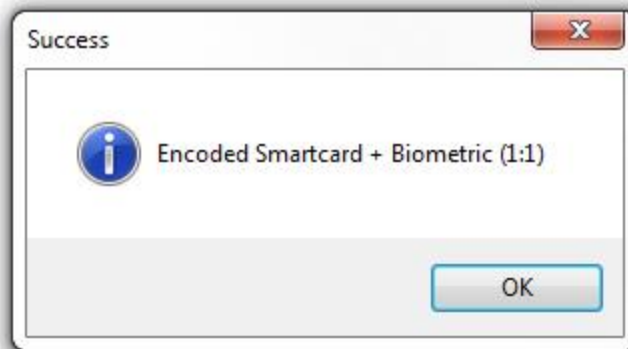
Encode the new User

- ▶ After you capture your fingerprints it will request to encode the card



Encode the new User continues

- ▶ Place your card on the Omnikey



Website

- ▶ Please visit our website Service.morphotrak.com for software, firmware, videos and PDF's.