

Backup and restore on **Compact Edition** of Morpho Manager

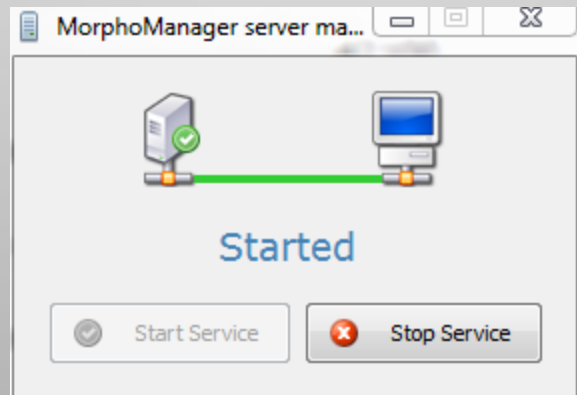
Full SQL edition please talk to your System administrator

Step One

Stop Services

Stop Morpho Manager Server

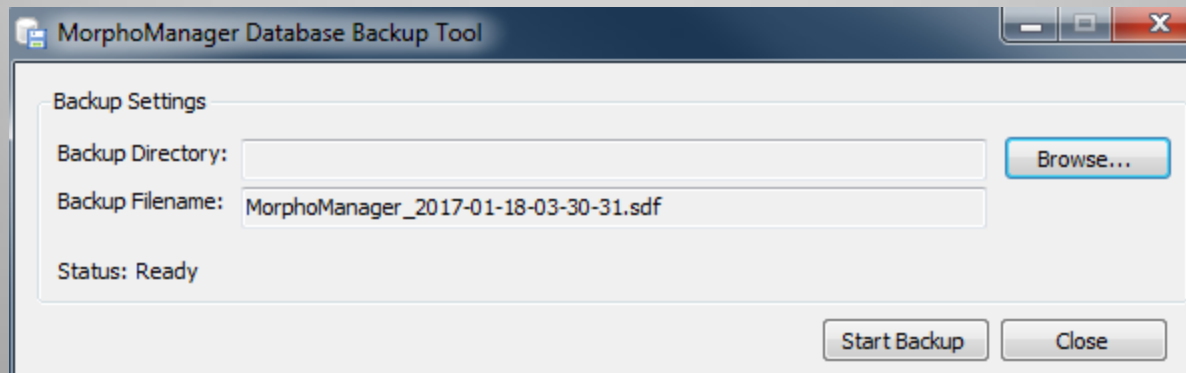
Navigate to: Start>All Programs>Morpho Manager>Server>MorphoManager Server Manager



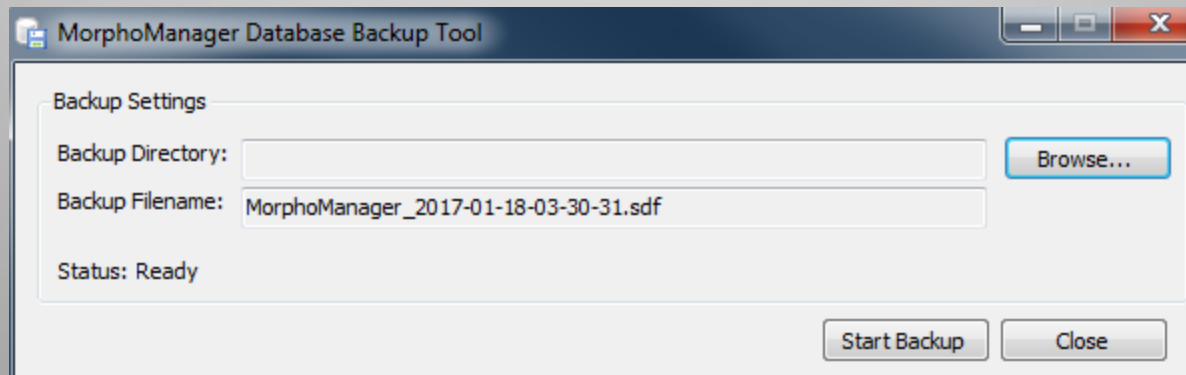
Step Two

Database Backup Tool

Navigate to: Start>All
Programs>Morpho
Manager>Server>MorphoManager
Database Backup Tool



Browse to a location you wish to save the Database and Start Backup



Step Three

On new PC*

Software installation

On New PC*

Install Morpho Manger (**with the same version**)
on your new PC



MorphoManager

Username:

Password:

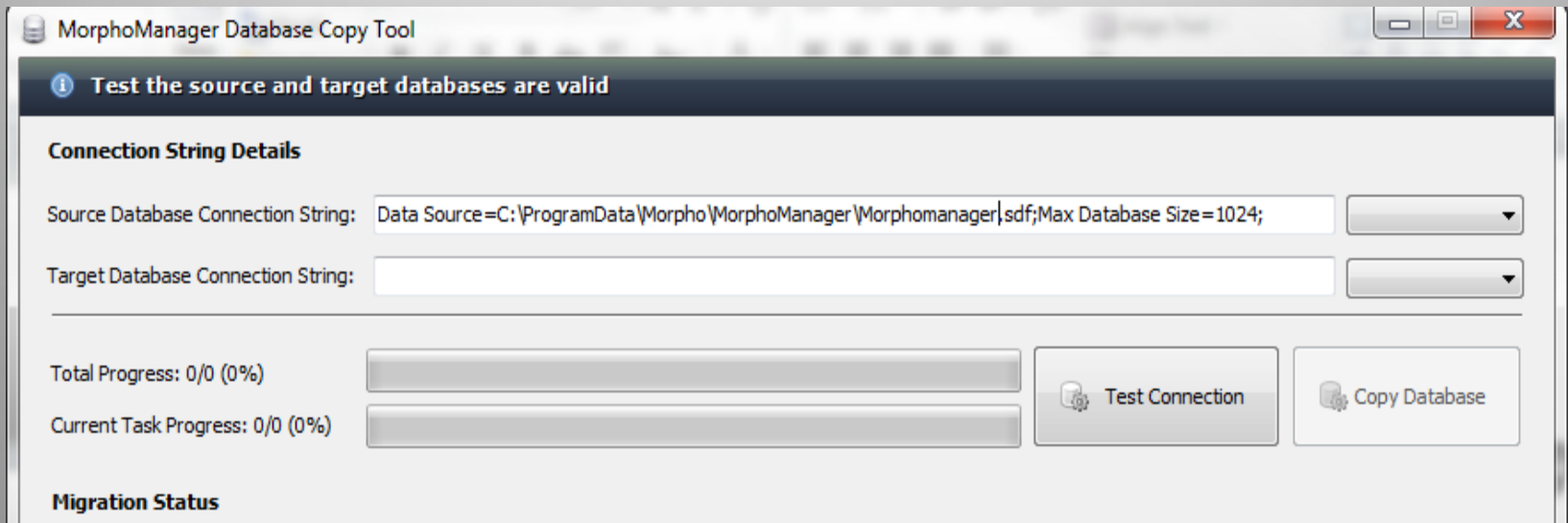
Port:

Step Four

Database Copy Tool

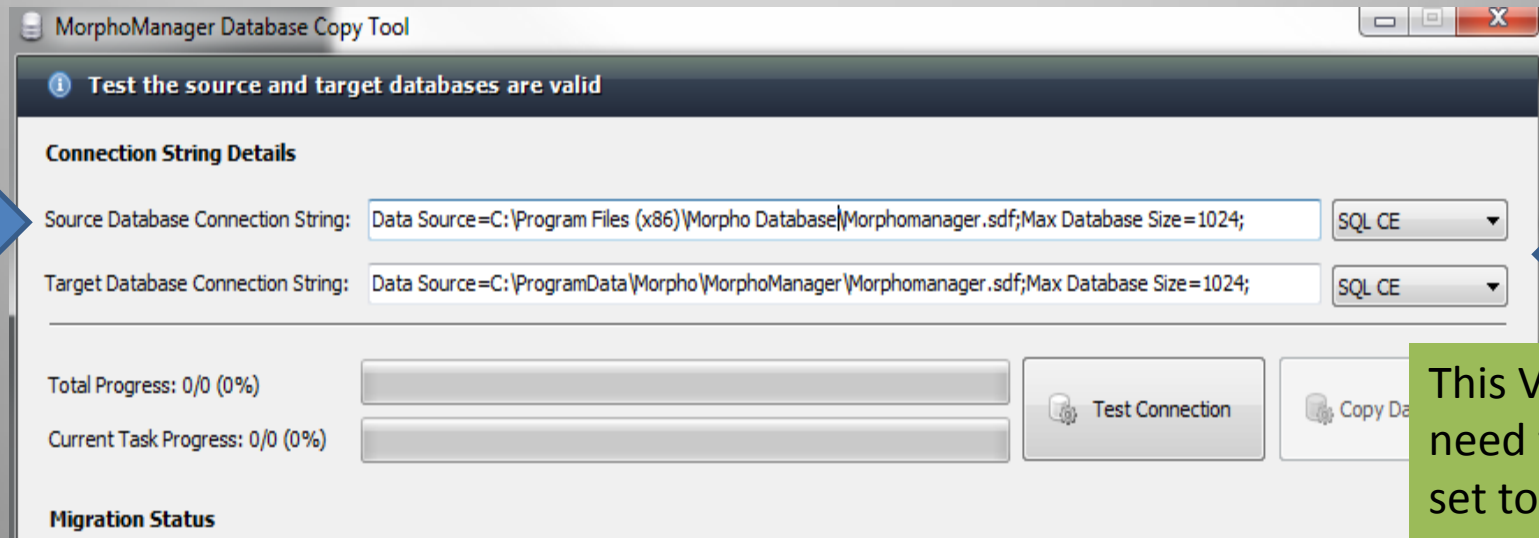
On New PC*

Navigate to: Start>All Programs>Morpho
Manager>Server>MorphoManager Database Copy
Tool



On New PC*

Take the copied Database from the old PC and place in on your C drive, write in the location in the Source Database Connection String (this is only an example)



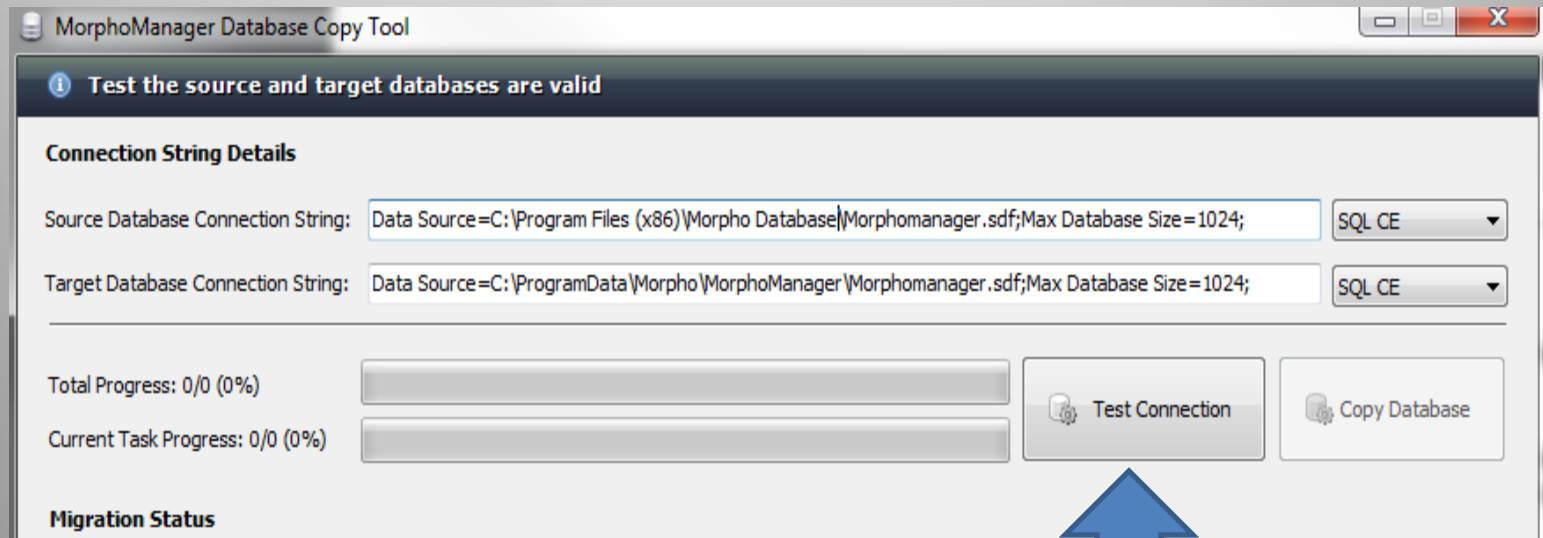
The screenshot shows the MorphoManager Database Copy Tool window. At the top, a status bar reads "Test the source and target databases are valid". Below this, the "Connection String Details" section contains two text boxes for connection strings and two dropdown menus for database engines. The Source Database Connection String is "Data Source=C:\Program Files (x86)\Morpho Database\Morphomanager.sdf;Max Database Size=1024;" and the Target Database Connection String is "Data Source=C:\ProgramData\Morpho\MorphoManager\Morphomanager.sdf;Max Database Size=1024;". Both dropdown menus are set to "SQL CE". Below the connection strings are progress bars for "Total Progress: 0/0 (0%)" and "Current Task Progress: 0/0 (0%)", and buttons for "Test Connection" and "Copy Data".

Field	Value	Database Engine
Source Database Connection String	Data Source=C:\Program Files (x86)\Morpho Database\Morphomanager.sdf;Max Database Size=1024;	SQL CE
Target Database Connection String	Data Source=C:\ProgramData\Morpho\MorphoManager\Morphomanager.sdf;Max Database Size=1024;	SQL CE

This Values need to be set to SQL CE

On New PC*

Click on Test Connection then Copy Database

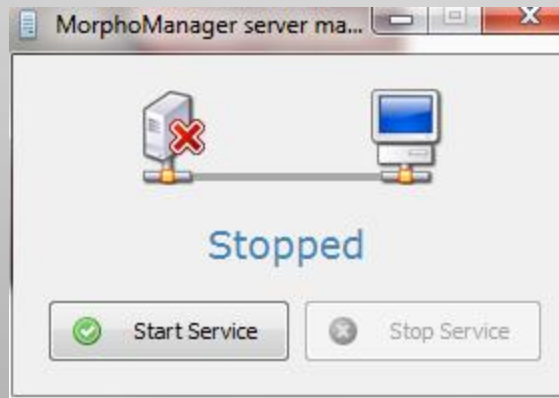


Step Five

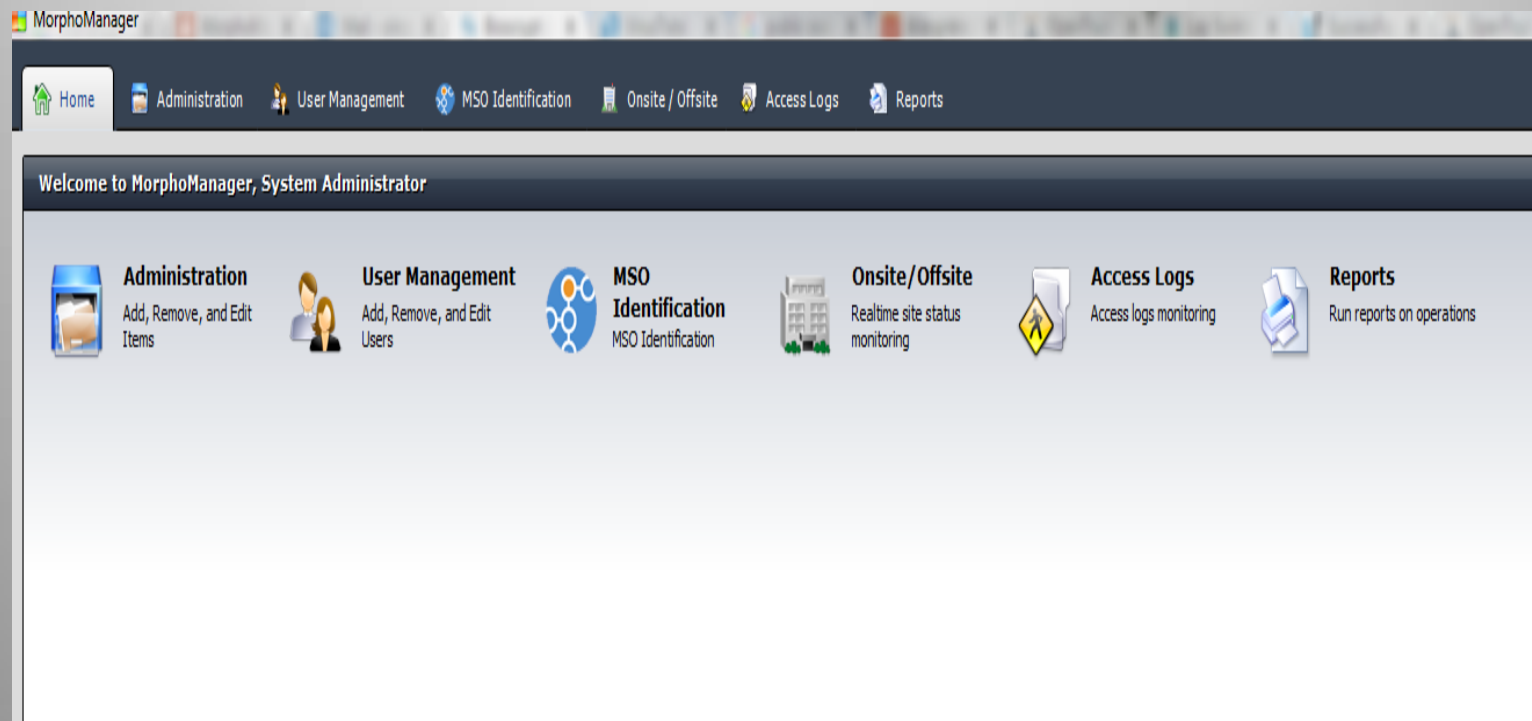
Start Services

Start Morpho Manager Server

Navigate to: Start>All Programs>Morpho Manager>Server>MorphoManager Server Manager



Database has been restored onto a New PC and you can launch Morpho manager Client

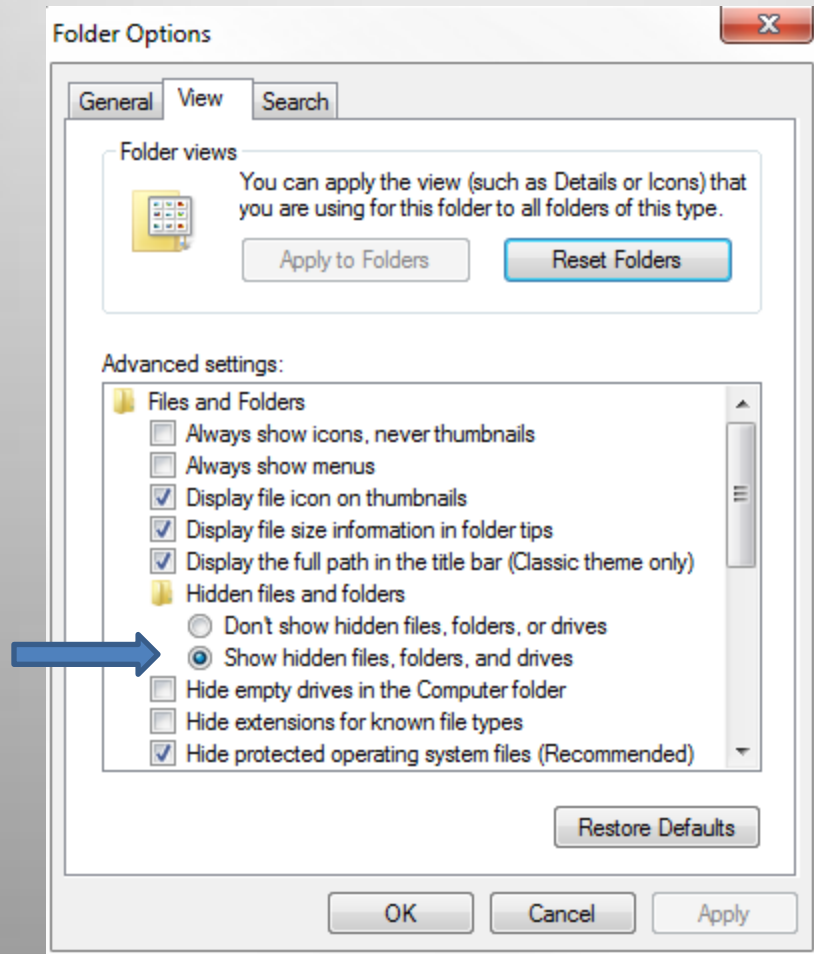


For Advance User

Step One

Folder options

Change Folder options on PC , click on Show Hidden files, folders and drives

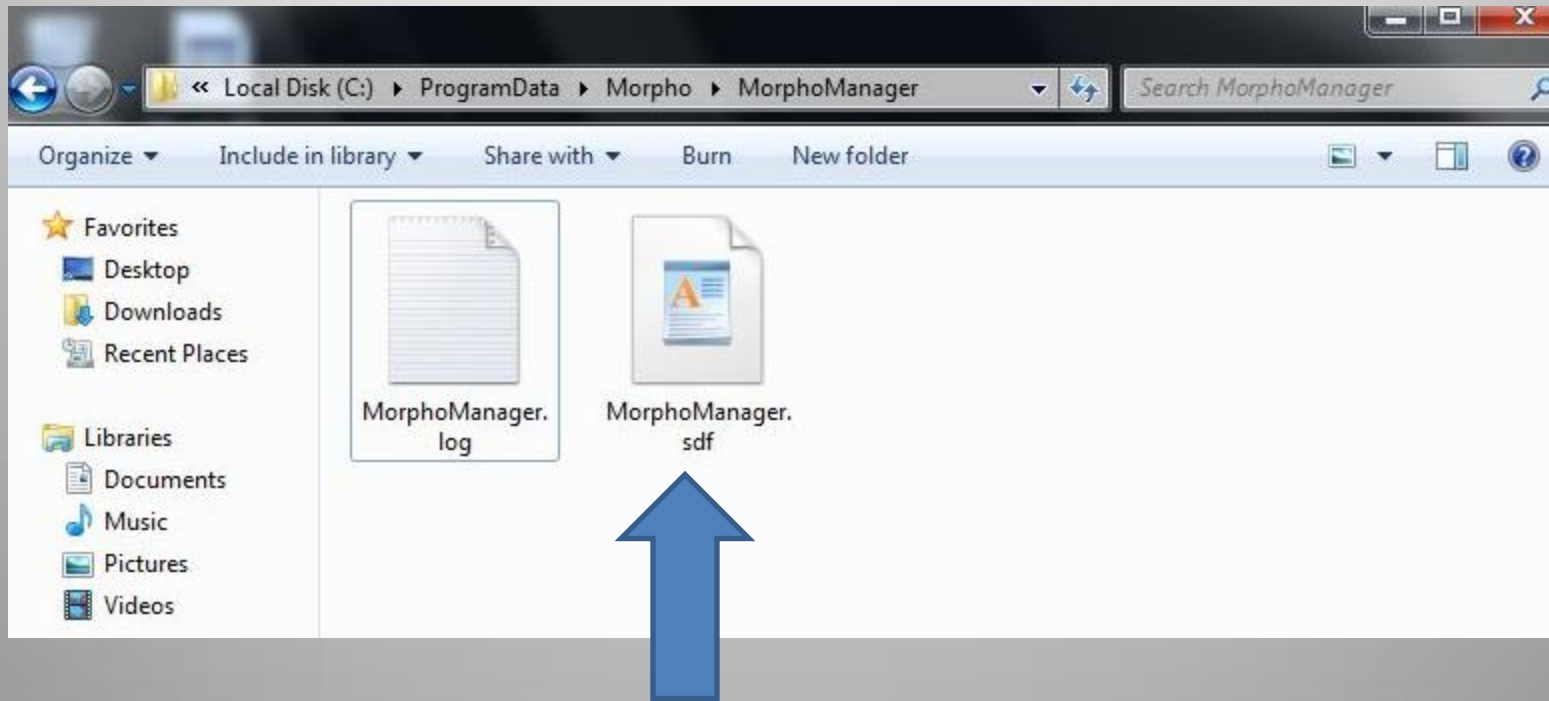


Step Two

Copy MorphoManager.sdf

Navigate to:

C:\ProgramData\Morpho\MorphoManager



Copy MorphoManager.sdf

Step Three

on New PC*

Software installation

On New PC*

Install Morpho Manger (**with the same version**)
on your new PC



MorphoManager

Username:

Password:

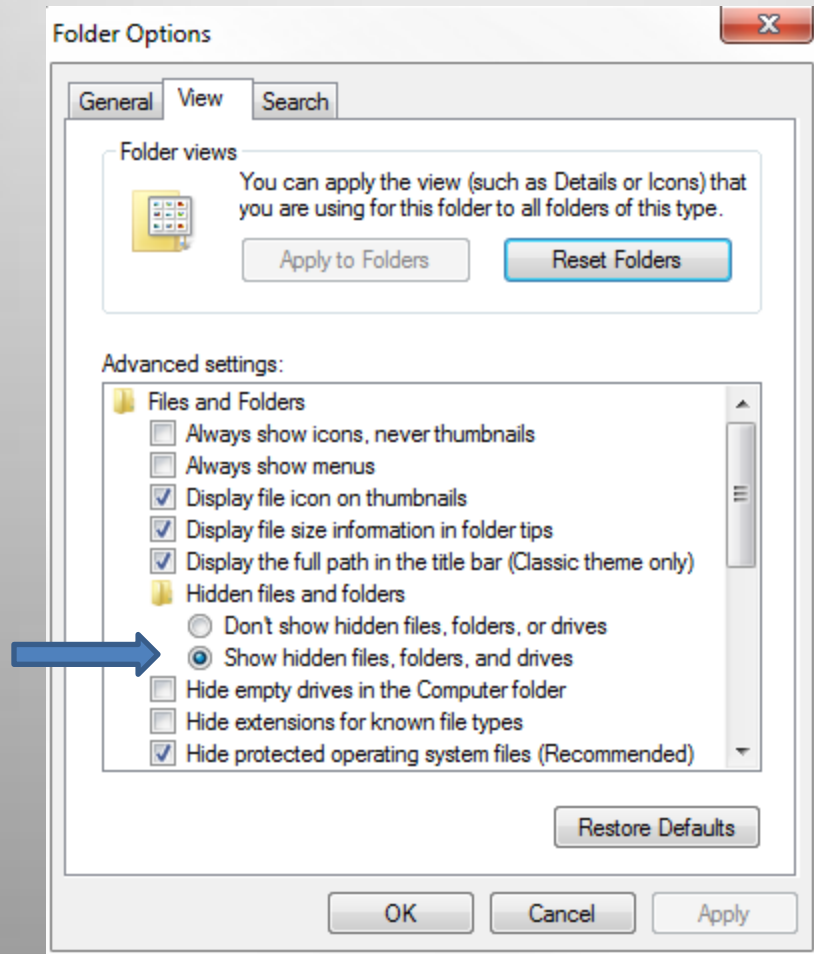
Port:

Advance User

Step Four on New PC*

Folder options

Change Folder options on PC ,click on Show Hidden files, folders and drives

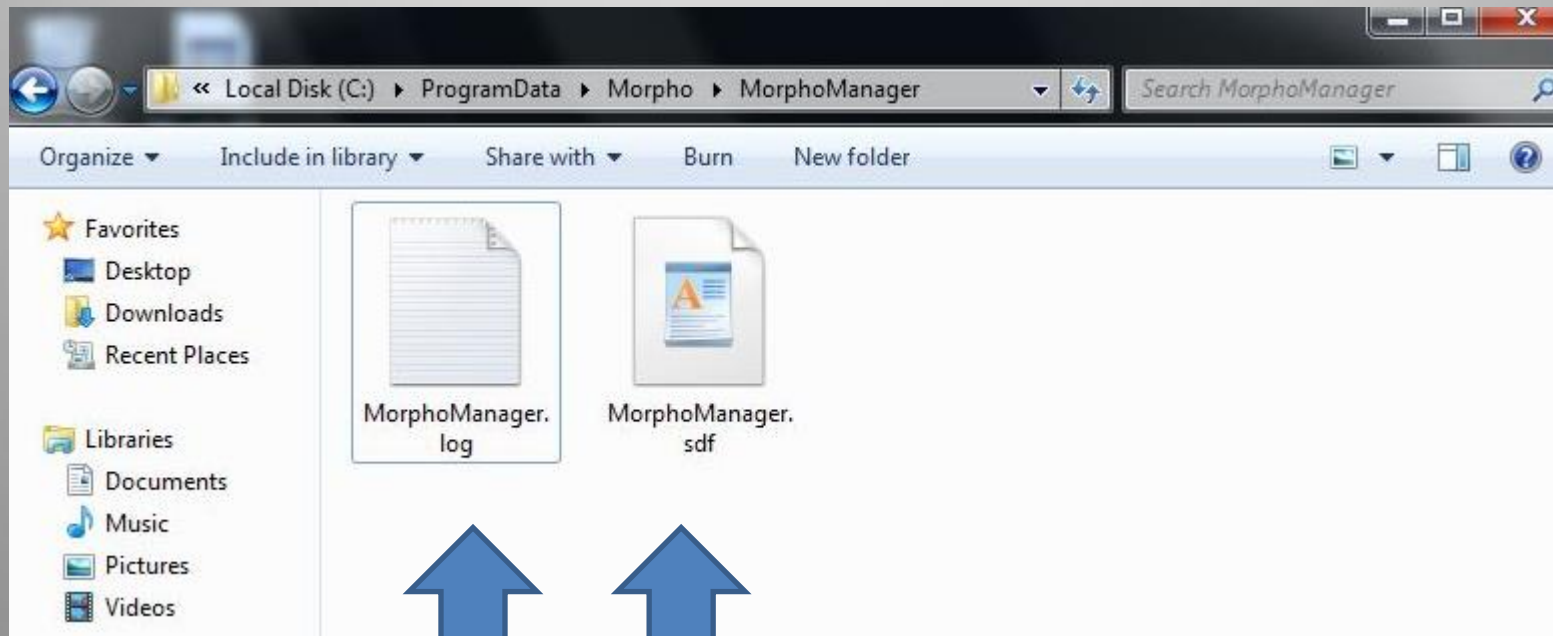


Step Five on New PC*

Delete Files

Navigate to:
C:\ProgramData\Morpho\MorphoManager

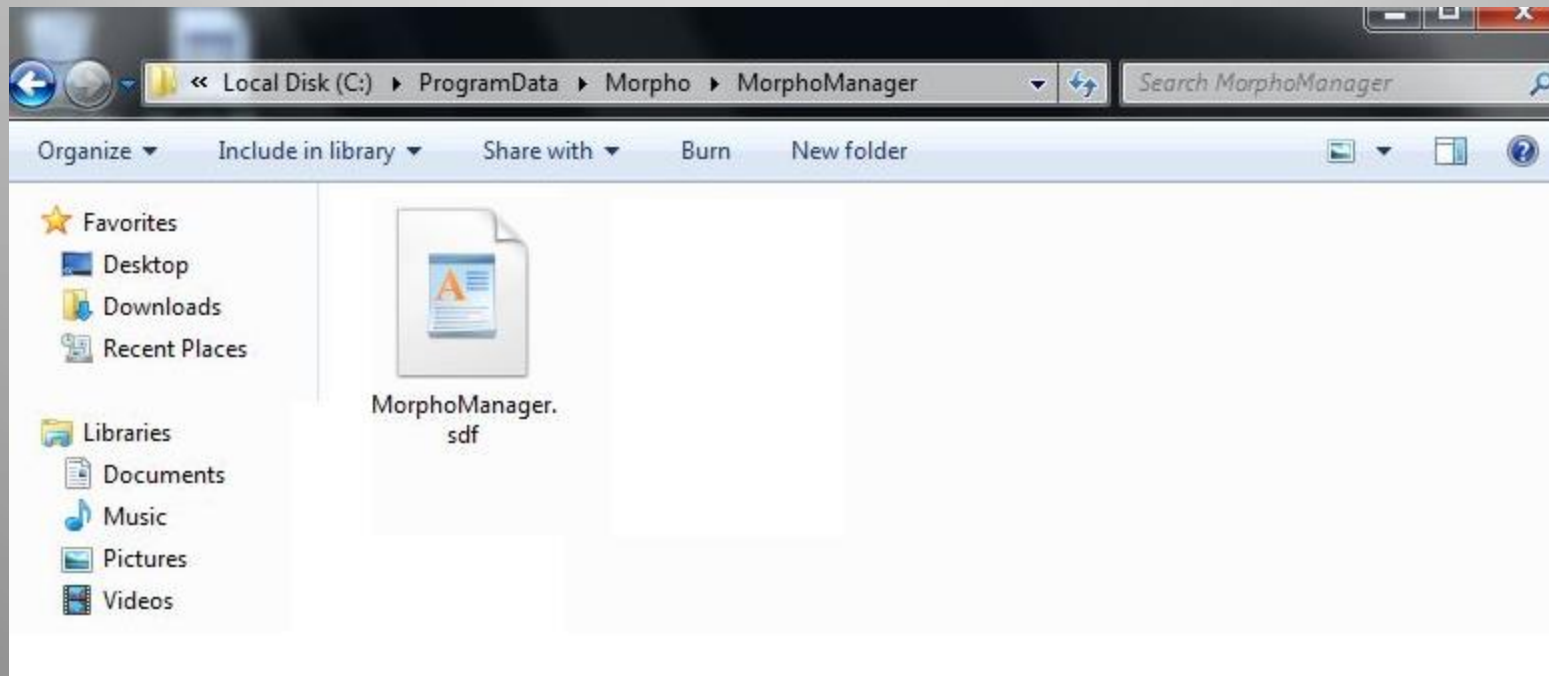
Delete the MorphoManager.Log file and the
MorphoManager.sdf



Advance User

On New PC*

Replace the Morpho Manager.sdf from the old PC

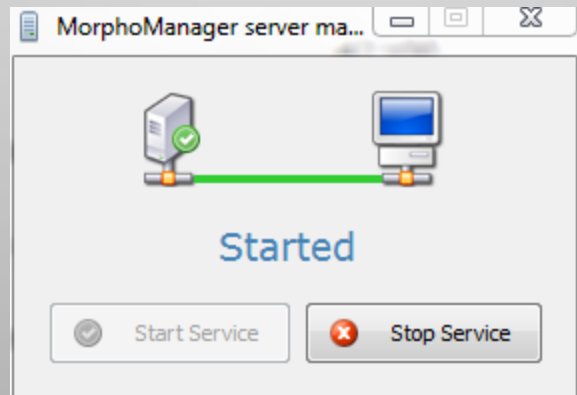


Advance User

Step Six
on New PC*
Stop Services

Stop Morpho Manager Server

Navigate to: Start>All Programs>Morpho Manager>Server>MorphoManager Server Manager



Step Seven

on New PC*

Test Configuration

Navigate to: Start>All Programs>Morpho Manager>Server>Morpho Manager Advanced Server Configuration

The screenshot shows the 'MorphoManager advanced server configuration' window. It is divided into three main sections: Network configuration, Database configuration, and Database utilities.

Network configuration:

- Remoting channel type: TCP (dropdown)
- Remoting port: 42100 (spin box)
- Remoting hostname: (empty text box) (leave blank to enable autodetect)
- Remoting bindto: 0.0.0.0 (text box) (leave blank to enable autodetect)
- Broadcast listening port: 43100 (spin box)

Database configuration:

- Database provider type: SQL Server Compact Edition 4.0 (dropdown)
- Maximum DB ready delay: 90000 (spin box) (ms)
- ADO.NET connection string: Data Source=C:\ProgramData\Morpho\MorphoManager\MorphoManager.sdf;Max Database Size

Database utilities:

This section contains a large empty text area and two buttons: 'Create database schema' and 'Drop database schema'.

At the bottom of the window, there are three buttons: 'Apply changes', 'Revert changes', and 'Close'. A 'Test configuration' button is also present in the Database configuration section.

Click on Test Configuration only

MorphoManager advanced server configuration

Network configuration

Remoting channel type: TCP

Remoting port: 42100

Remoting hostname: (leave blank to enable autodetect)

Remoting bindto: 0.0.0.0 (leave blank to enable autodetect)

Broadcast listening port: 43100

Database configuration

Database provider type: SQL Server Compact Edition 4.0

Maximum DB ready delay: 90000 (ms)

ADO.NET connection string: Data Source=C:\ProgramData\Morpho\MorphoManager\MorphoManager.sdf;Max Database Size

Test configuration

Database utilities


Create database schema

Drop database schema

Apply changes

Revert changes

Close



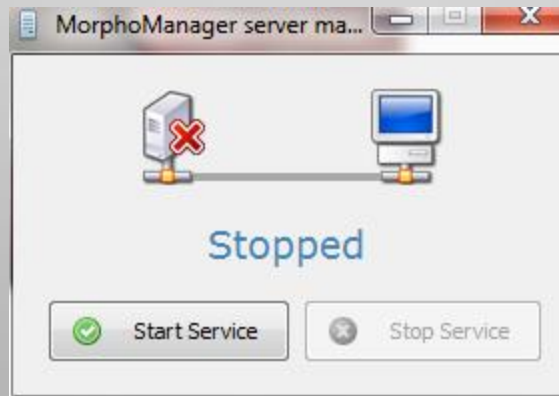
Advance User

Step Eight

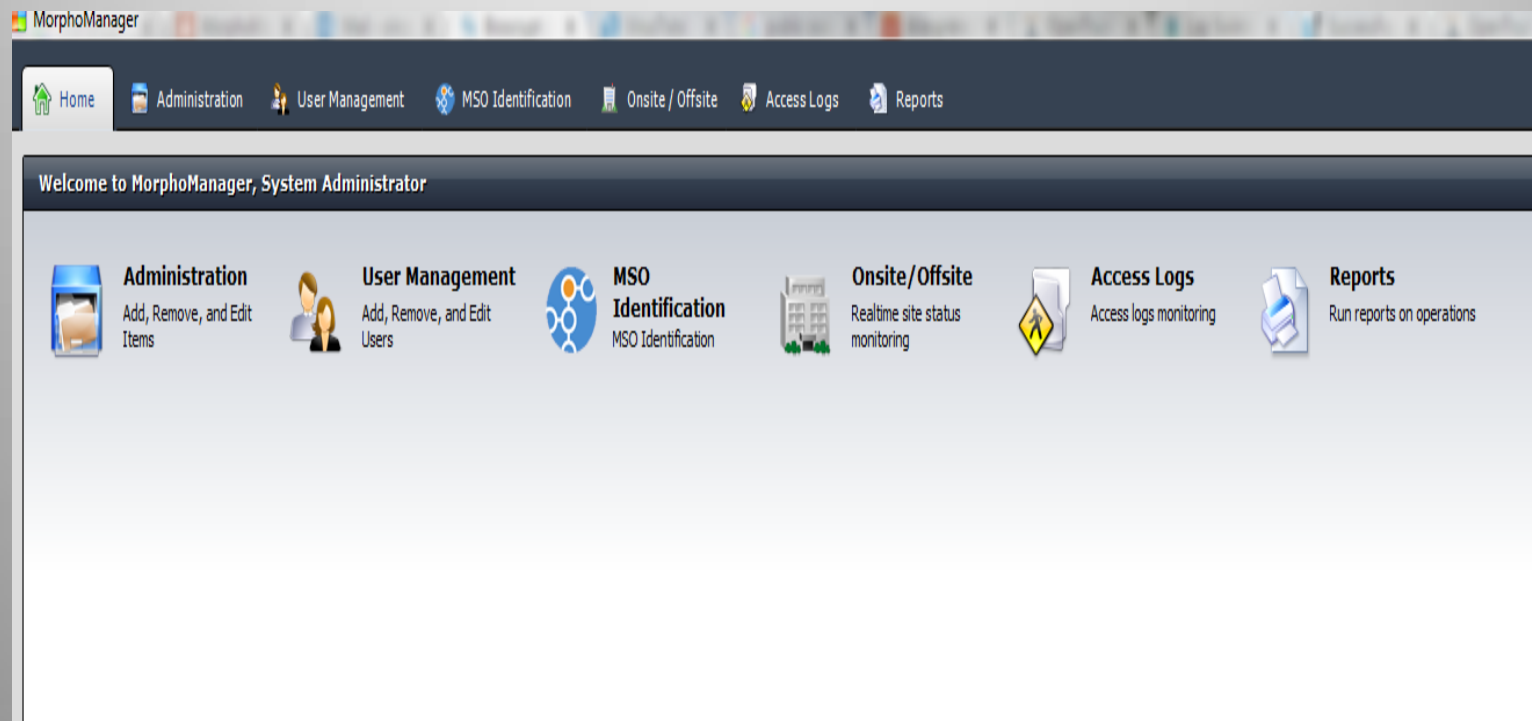
Start Services

Start Morpho Manager Server

Navigate to: Start>All Programs>Morpho Manager>Server>MorphoManager Server Manager



Database has been restored onto a New PC and you can launch Morpho manager Client



- ***Website***

- Please visit our website,
Service.morphotrak.com for software,
firmware, videos and PDF's.