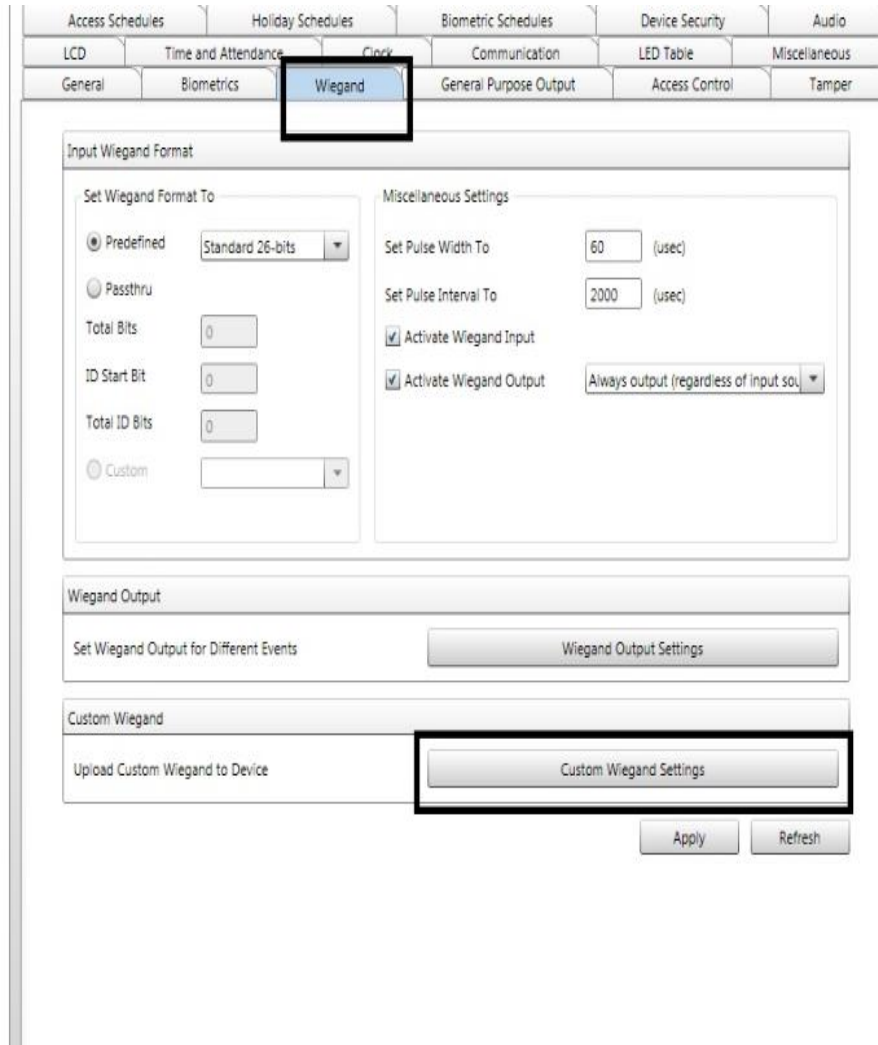
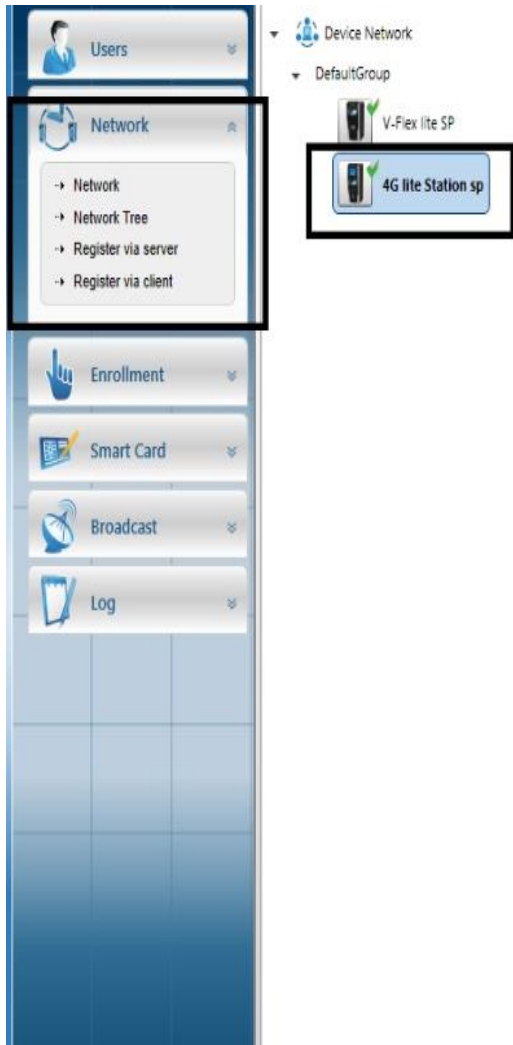


How to put in a FC using Secure Admin lite

Go to network , network tree, expand the device network and default group, double click on your unit , go to the wiegand tab.



Select Custom weigand, a window pops open select the dropdown arrow and file

The screenshot displays the Morphotrak software interface. On the left is a navigation sidebar with options: Network, Network Tree, Register via server, Register via client, Enrollment, Smart Card, Broadcast, and Log. The main area shows the 'Input Wiegand Format' configuration window. A '4G lite Station sp' device is connected. The 'Set Wiegand Format To' section has 'Predefined' selected with 'Standard 26-bits' in the dropdown. Other fields include 'Total Bits', 'ID Start Bit', and 'Total ID Bits', all set to 0. The 'Miscellaneous Settings' section includes 'Set Pulse Width To' (60 usec), 'Set Pulse Interval To' (2000 usec), 'Activate Wiegand Input' (checked), and 'Activate Wiegand Output' (checked) with a dropdown set to 'Always output (regardless of input sou...'. Below these are 'Wiegand Output Settings' and 'Custom Wiegand Settings' buttons. A 'Custom Wiegand Settings' dialog box is open in the foreground, showing a table with 8 slots, all with 'None' as the format name. A context menu is open over the first row, with 'File' selected. The 'Custom Wiegand Settings' button in the background is also highlighted with a black box.

Input Wiegand Format

Set Wiegand Format To

Predefined Standard 26-bits

Passthru

Total Bits 0

ID Start Bit 0

Total ID Bits 0

Miscellaneous Settings

Set Pulse Width To 60 (usec)

Set Pulse Interval To 2000 (usec)

Activate Wiegand Input

Activate Wiegand Output Always output (regardless of input sou...

Wiegand Output Settings

Custom Wiegand Settings

Apply Refresh

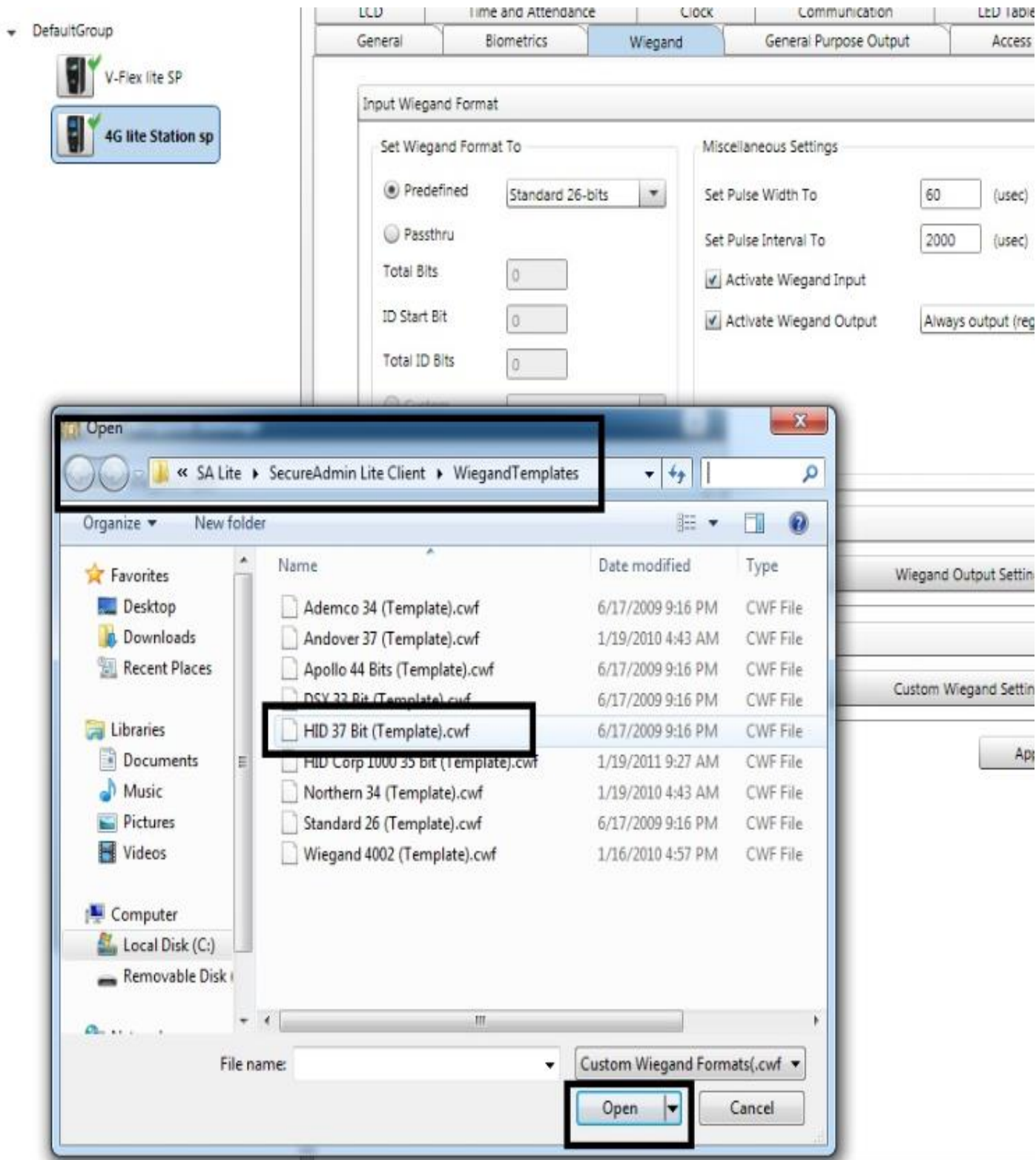
Custom Wiegand Settings

Custom Wiegand Table

Slot #	Format Name
1	None
2	None
3	None
4	None
5	None
6	None
7	None
8	None

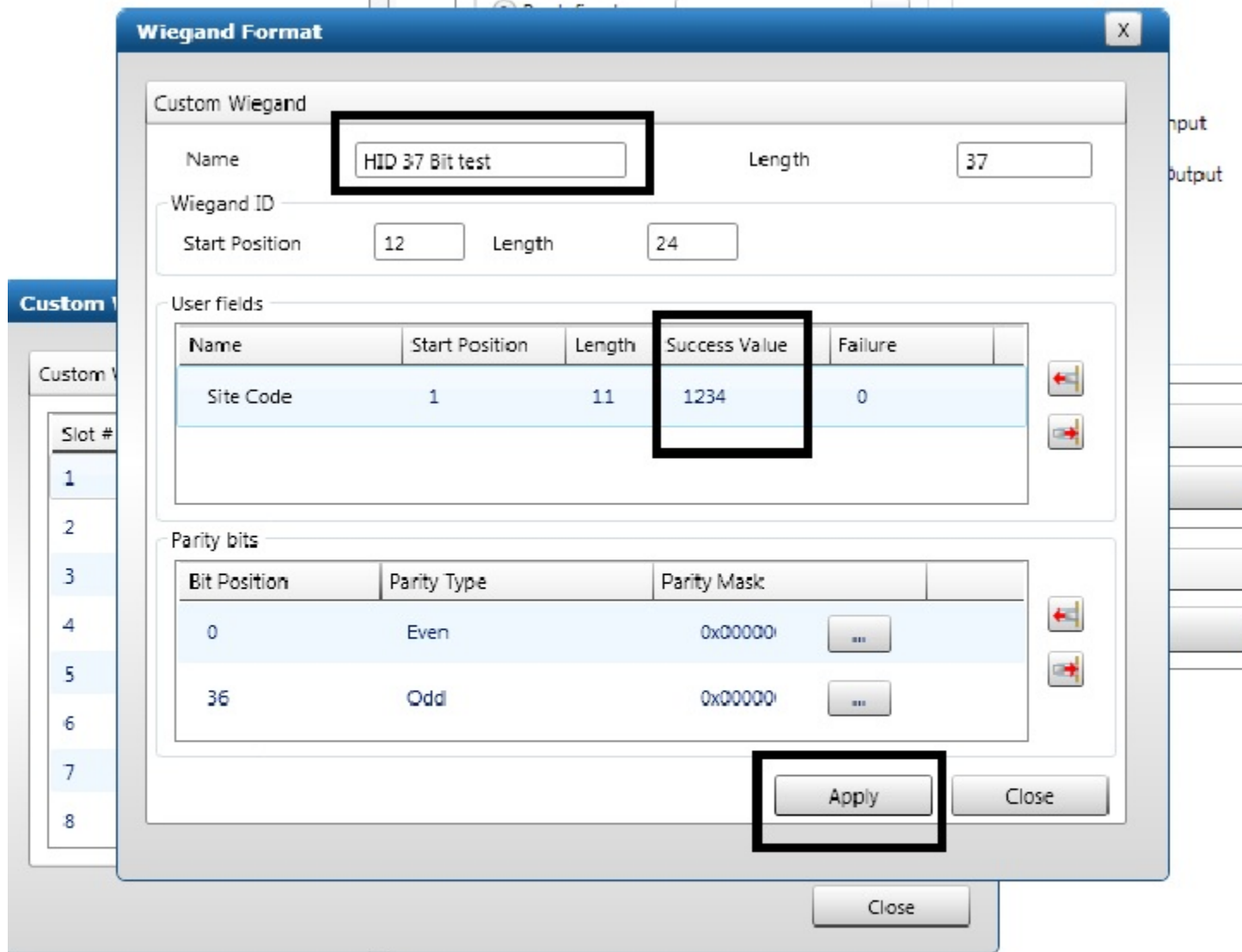
Close

Browse to the pre define wiegand format, Locate C drive, Program files, Bioscrypt, SA lite, Secure Admin lite Client, wiegand tempates. Select your format.



***Rename the format ***

Change the success value to your facility code hit apply.



You will see the custom button be highlighted and select your custom format.

Hit apply.

LCD Theme Configuration	Time and Attendance	Clock	Communication	LED Table	ACP Feedback	Miscellaneous
General	Biometrics	Wiegand	General Purpose I/O	Single Door Access Control	Tamper	

Input Wiegand Format

<input type="radio"/> Predefined	Standard 26-bits
<input type="radio"/> Passthru	
Total Bits	0
ID Start Bit	0
Total ID Bits	0
<input checked="" type="radio"/> Custom	Test HID37 (Slot # 2)

Miscellaneous Settings	
Set Pulse Width To	60 (usec)
Set Pulse Interval To	2000 (usec)
<input checked="" type="checkbox"/> Activate Wiegand Input	
<input checked="" type="checkbox"/> Activate Wiegand Output	Always output (regardless of input source)

Wiegand Output

Set Wiegand Output for Different Events	Wiegand Output Settings
---	-------------------------

Custom Wiegand

Upload Custom Wiegand to Device	Custom Wiegand Settings
---------------------------------	-------------------------

Apply Refresh