

MorphoManager

BioBridge

Siemens SiPass

Quick Start Guide



Table of Contents

Introduction.....	3
Support.....	3
Before you begin	4
Setting up BioBridge	5
Wiegand Profiles.....	5
Biometric Device Profile	6
Biometric Device(s).....	7
User Policy	8
User Distribution Groups	9
BioBridge System Configuration	10
Using the BioBridge Enrollment Client	13
Toolbar.....	13
Enroll.....	14
Edit.....	14
Encode Card.....	14
Filter.....	15
Refresh.....	15
Search Field.....	15
Data Grid.....	16
Embedded enrollment.....	17
MorphoManager Update from version 10 and prior	18

Introduction

BioBridge is an enrollment and synchronization middleware that overlays enrollment and demographic synchronization between MorphoManager and third party data sources. The infrastructure is extensible and supports interfacing to multiple third party systems (one at a time) by the implementation of an interface. BioBridge is not dependent on the underlying technology platform required for integration.

BioBridge supports the following version of Siemens SiPass:

- 2.7.6 SP1

Support

Please contact your installer for additional support.

Before you begin

The following steps must be performed before you may proceed:

- Ensure that you have installed the SiPass Client (only if the SiPass Server is not installed) on the same workstation that the MorphoManager Server is installed (See Siemens SiPass Integrated Install Guide Chapter 3.3).
- Configure MorphoManager Server to log on as "This Account". The account information used to log on as "This account" needs to be a common account on both the SiPass Server and the MorphoManager Server. (See Siemens SiPass Integrated Install Guide Appendix 10.1)
 - Go to Services > Right Click on MorphoManager Server> Select Properties > Select Log On > Select "This account" > Enter Required Credentials > Click Apply > Click OK

Setting up BioBridge

The following areas of MorphoManager will need to be configured as part of the Siemens SiPass BioBridge setup:

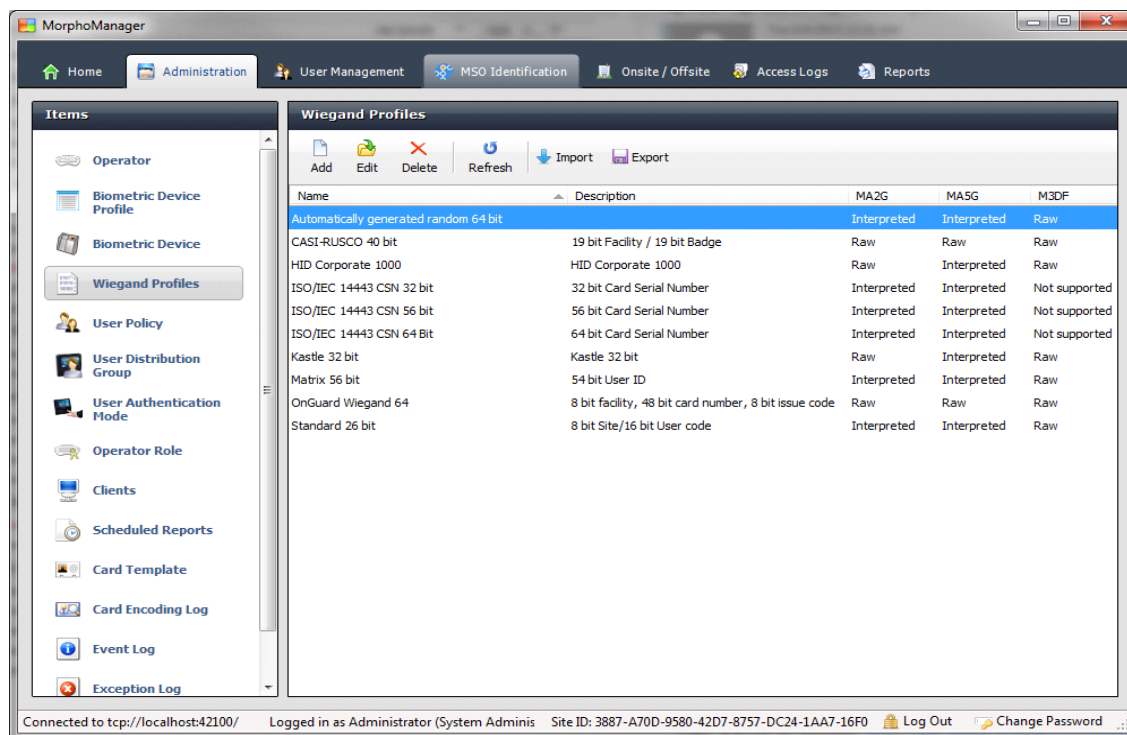
- Wiegand Profiles
- Biometric Device Profiles
- Biometric Device
- User Policy
- User Distribution Group
- BioBridge System Configuration


Wiegand Profiles

Wiegand Profiles define what information is output over the Wiegand Out interface of the Morpho Biometric Devices when a user is identified. This is most typically used in conjunction with an Access Control System.

- From Administration tab select Wiegand Profile
- Click **Add** button to create a custom Wiegand profile.

The Wiegand formatting used can vary from system to system, but some common formats are listed below.

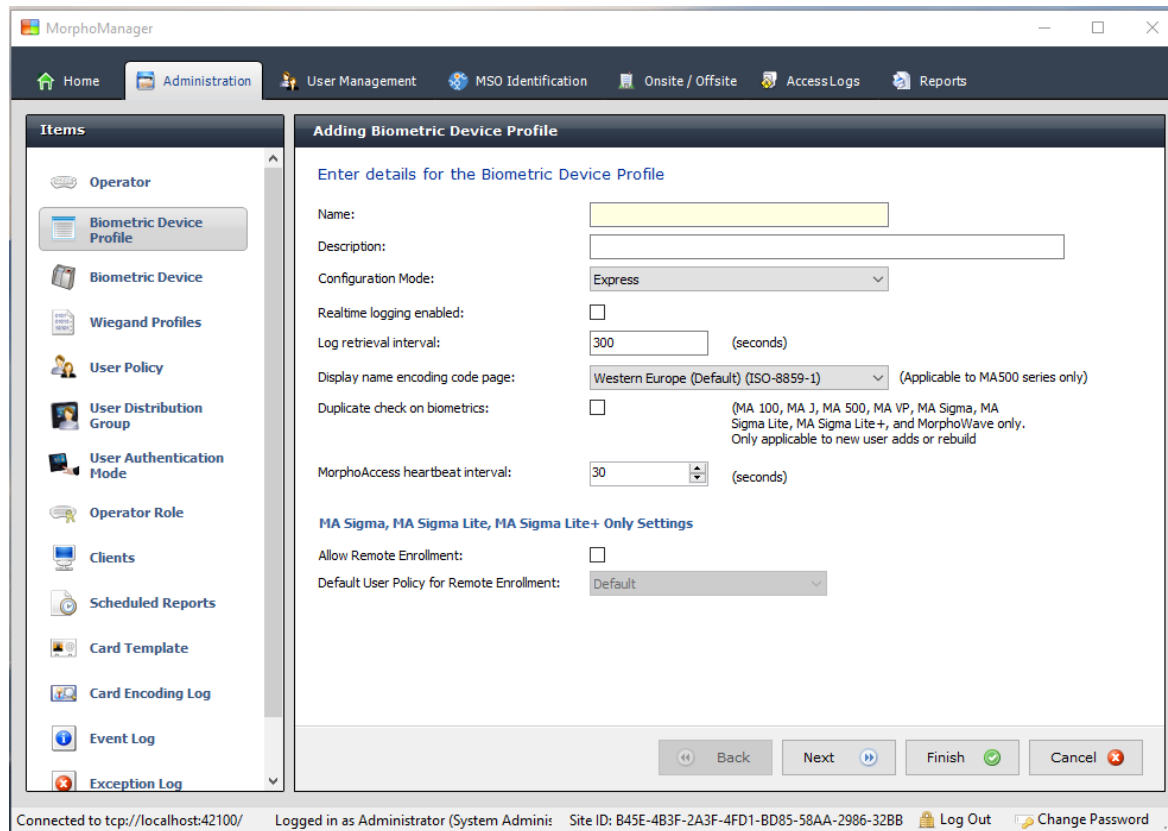


 The actual setting of the Wiegand Profile from this list will be done at the User Policy and Biometric Device Profile Level. Please refer to those sections for further details.

Biometric Device Profile

The Biometric Device Profile will define common settings and parameters for one or more biometric devices. This profile can be applied when adding units into the system from the Biometric Device section of Administration.

- From Administration tab select Biometric Device Profile.
- Click **Add** button to create a new Biometric Device Profile.



In order to create the most basic profile utilizing biometrics stored on the devices that can be used, simply give the profile a name and click **Finish**. Please reference the MorphoManager User Manual for more detail on all the various properties that can be assigned to a Biometric Device Profile including the use of smartcards.



If you plan on using a Wiegand Profile, you will need to set the Wiegand Profile for the Biometric Device(s) here. The Wiegand Profile you choose for your devices must marry to the one being utilized for your users set in the User Policy section of this guide.

Biometric Device(s)

A Biometric Device is the device used to verify users and allow access to doors. They record a log of every attempt to gain access. MorphoManager is used to manage user's access to Biometric Devices.

- From Administration tab select Biometric Device.
- Click **Add** button to create a new Biometric Device.
- Enter the details for the device including the Hardware Family the device falls into, the IP address, and the Biometric Device Profile.

- Once the required details are entered click **Finish**.

Below is a screenshot of how the Biometric Device Screen looks after the configuration and the devices are online.


User Policy

User policies are used to apply access rights and rules to all members of the group.

To Configure BioBridge, MorphoManager’s UserPolicy with an Access Mode “**Per User**” must be selected.

This will create User Distribution Groups (groups of Biometric Devices) that can place the enrolled user into specific devices.

- From Administration tab select User Policy.
- Click **Add** button to create a new User Policy.

 If you plan on using a Wiegand Profile, you will need to set it here in order for the users enrolled in this User Policy to have a particular Wiegand Profile. The Wiegand Profile you choose for your users must marry to the one you utilize for your biometric access devices set in the Biometric Device Profile section of this guide.

The default User Policy will be set to utilize an authentication mode of Biometric (1: Many). To utilize another authentication mode (such as encoding smartcards) additional User Policies can be created.

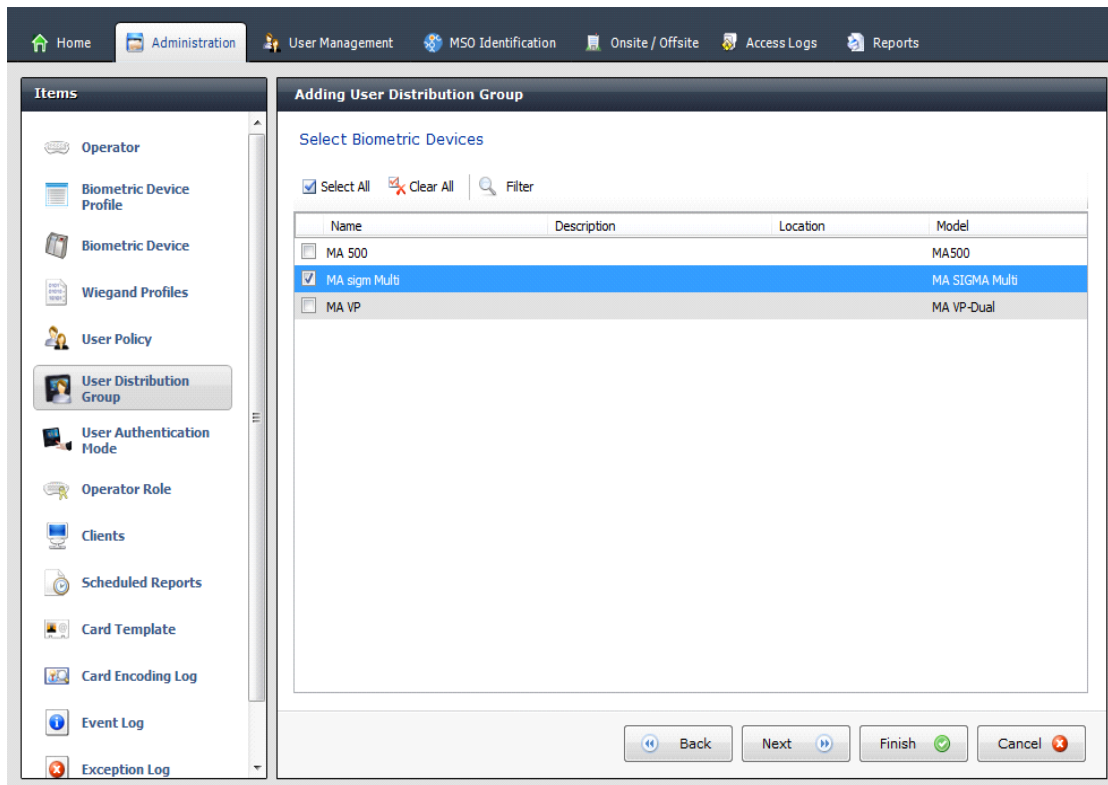
Please reference the MorphoManager User Manual for more detail on all the various properties that can be assigned to a User Policy including Wiegand Profile, Finger Biometric Enrollment Minimum, Fingers, Access Modes and User Authentication Modes.

User Distribution Groups

User Distribution Groups are designed to distribute users onto groups of MA readers or MorphoManager Clients. In order to be utilized the user must be in a User Policy that has its Access Mode set to “Per User”. Then the User Distribution Groups will be selectable when creating (or editing) a user.

- From Administration tab select User Distribution Group.
- Click **Add** button to create a new User Distribution Group.

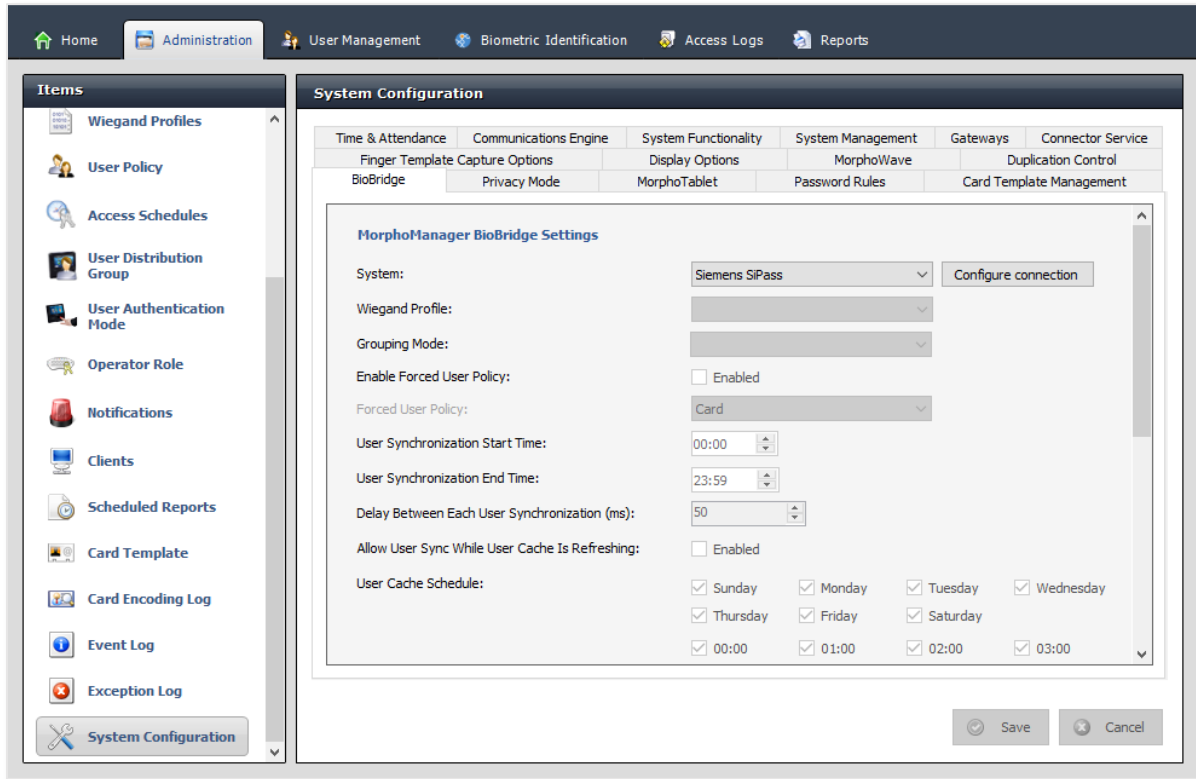
Below is the screenshot where group will only be placing users on one of the three devices installed on the system.



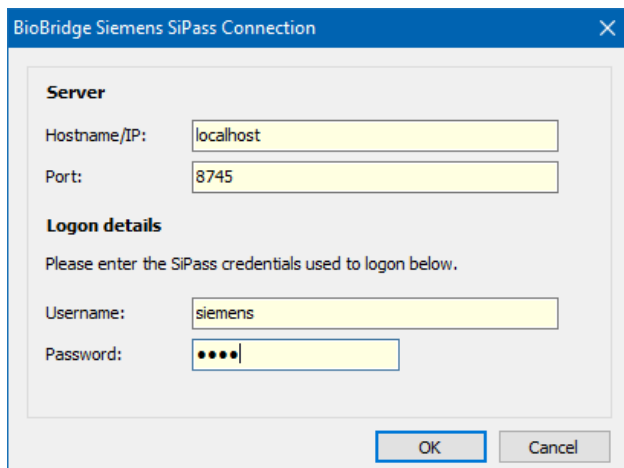
BioBridge System Configuration

The last step in the process is to configure BioBridge specifications to SiPass.

From Administration, select System Configuration.
 Select the BioBridge Tab in System Configuration.



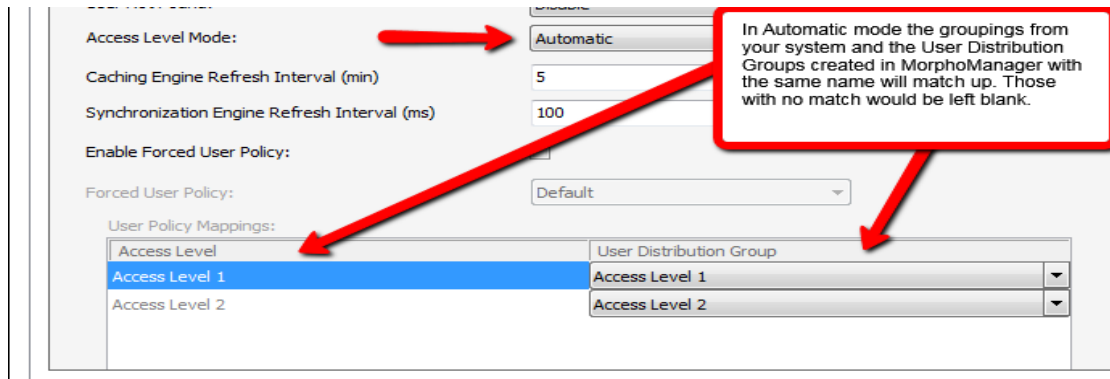
System: From the System drop down menu choose SiPass and click the **Configure connection** button. A BioBridge connection box window will pop up. Fill in all the required fields and click OK.



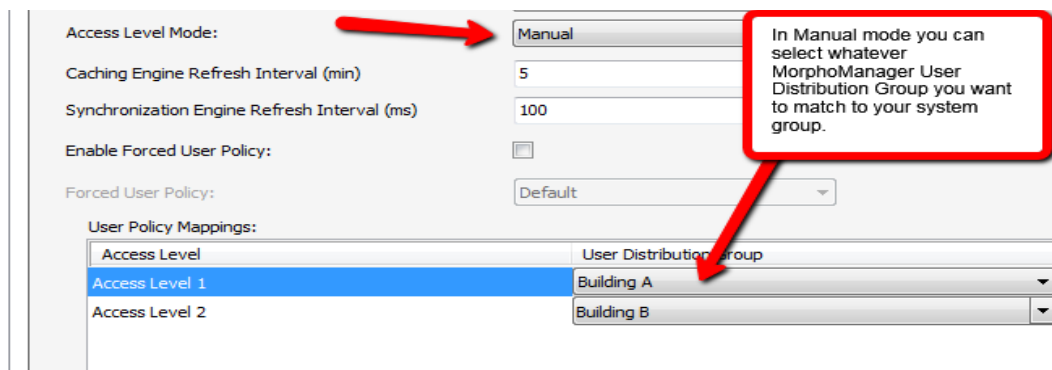
Wiegand Profile: Select the Wiegand format in use from the drop down menu.

Grouping Level Mode: This setting determines how MorphoManager should map SiPass users into MorphoManager User Distribution Groups.

Automatic: This mode will automatically match Access Level groups from SiPass to the ones created in MorphoManager User Distribution Group if they have the same naming convention.



Manual: If the Access Level grouping names of SiPass and the User Distribution Group(s) created in MorphoManager are not the same, then selecting which SiPass Access Level maps to which MorphoManager User Distribution Group can be done manually in the User Policy Mappings.



For basic setups, the following settings do not require any changes:

Enable Forced User Policy

By activating this feature, you can select a User Policy from the drop down menu. The 3rd party user will automatically be placed in this User Policy during the enrollment process started in the BioBridge Enrollment Client. The User Policy selected here must be a “Per User” access mode policy.

User Synchronization Start Time and End Time

The user synchronization engine will only be permitted to run in this time frame.

Delay between Each User Synchronization

The duration that the User Synchronization Engine will sleep between each user sync. Increase the delay time to use less system resources, but this will also extend the time it takes for all the users to be updated.

Allow User Sync While User Cached Is Refreshing

When enabled, the User Synchronization engine will run in parallel to the User Cache Refresh. This is very taxing on system resources. It is recommended to disable this setting when using large databases.

User Cache Refresh Schedule

The specified times when the user cache refresh may start. The ideal schedule would be 24/7, but this is not always possible with large databases.

Using the BioBridge Enrollment Client

After configuring BioBridge you will now utilize the BioBridge Enrollment Client. This client will check if BioBridge Integration has been enabled and configured. If it has not, the application will display the message “BioBridge integration has not been enabled and configured” and you will need to go back to MorphoManager/Administration/System Configuration/BioBridge to configure it properly.

If BioBridge integration is configured the application will display a user management screen. The screen will consist of a toolbar and a data grid.

Toolbar

The toolbar will have the following items:

- Enroll
- Edit
- Encode Card
- Filter
- Refresh
- Search Field

The screenshot displays the 'User Management' interface. At the top, it shows 'Showing users: 1-2 of 2 filtered results (44992 total users)'. Below this is a toolbar with icons for 'Enroll', 'Edit', 'Encode Card', 'Filter', and 'Refresh'. A search field is present with the label 'Barcode Number' and a 'Search' button. The main area contains a table with the following data:

Barcode Number	First Name	Middle Name	Last Name	Access Levels	Enrollments	Disabled
420	David		West	1000 panels only	None	False
4568456169	David		West	Employees	None	False

At the bottom of the table, there are 'Page size: 25', 'Previous', and 'Next' buttons. Below the table is a 'Details' section with tabs for 'Details', 'Logs', and 'Finger Biometrics'. The 'Details' tab is active, showing a message: 'User has not been enrolled'. Below this message are fields for 'Date of Birth:', 'Selected Authentication:', 'User Group:', 'Disabled:', and 'Authentication Identifier:'. There are also 'Export Photo' and 'Add Photo' buttons. At the very bottom, the status bar shows 'Connected to tcp://127.0.0.1:42023/', 'Logged in as Administrator (System Administ', 'Site ID: 51D6-01B4-8801-4F38-A26A-4B37-18B1-EDFC', 'Log Out', and 'Change Password'.

Enroll

Enroll will start the enrollment of the selected user. The enrollment process will be derived from the standard MorphoManager user add/edit wizard with the following pages (For details on the enrollment process please see the User Management section of the MorphoManager User Manual):

- Authentication Type (Only if more than one mode is configured)
- 3D Face Selection
- 3D Face Enrollment
- Finger Selection
- Finger Enrollment

If a card based authentication method is configured the operator will be prompted if they want to encode a card.

Edit

Opens the already enrolled user details for viewing or editing.

Encode Card

Encode card will display an animation of the card being presented to a SDI 011 and wait for the card encoding to complete or be cancelled.

Filter

User Details

First Name:

Middle Name:

Last Name:

Barcode Number:

Date of Birth:

Enabled: Any Enabled Disabled

Sort By

Primary:

Secondary:

Tertiary:

Access Levels

Select All Clear All

Filter will show a popup inline form that allows filtering on the following items:

- First Name
- Middle Name
- Last Name
- Barcode Number
- Date of Birth
- Enabled/Disabled
- Access Levels

Refresh

Refresh will update the data currently being shown using the currently set filter conditions.

Search Field

The Search Field can be used to find individual users quickly and/or to migrate users from Siemens SiPass to the BioBridge Enrollment Client without waiting for a cache refresh.

Data Grid

The data shown in the data grid is a combination of your system and MorphoManager. Only users that exist in your system will be shown. A MorphoManager user does not exist until the user is enrolled. By default pagination is set for the first 25 BioBridge users to be shown. Operators may change the pagination to 25, 50, 100 & 250.

The data grid will have the following columns:

- Barcode Number
- First name
- Middle name
- Last name
- Access Levels – All of the groups that your user is a member of in your system.(Comma separated values)
- Enrollments (None, Finger, Finger & 3D Face, 3D Face) (Derived from linked MorphoManager User)
- Disabled- A value of either True or False will be present.

The screenshot displays the 'User Management' interface. At the top, it shows 'Showing users: 1-2 of 2 filtered results (44992 total users)'. Below this is a search bar with a 'Search' button. The main data grid has the following columns: Barcode Number, First Name, Middle Name, Last Name, Access Levels, Enrollments, and Disabled. Two rows are visible:

Barcode Number	First Name	Middle Name	Last Name	Access Levels	Enrollments	Disabled
420	David		West	1000 panels only	None	False
4568456169	David		West	Employees	None	False

Below the grid is a 'Details' panel with tabs for 'Details', 'Logs', and 'Finger Biometrics'. The 'Details' tab is active, showing a message: 'User has not been enrolled'. Below this message are fields for 'Date of Birth:', 'Selected Authentication:', 'User Group:', 'Disabled:', and 'Authentication Identifier:'. At the bottom of the details panel are 'Export Photo' and 'Add Photo' buttons. The footer of the interface shows the connection URL, login information, site ID, and options for 'Log Out' and 'Change Password'.

Enrolled user will show their MorphoManager details in the “Show Details” panel below the data grid. This area will be blank if the user has not been enrolled.

Embedded enrollment

Embedded enrollment is not supported for Siemens SiPass.

MorphoManager Update from version 10 and prior

After updating from MorphoManager v10 and prior, it will be necessary to reconfigure your biobridge connection.

Follow the [BioBridge System Configuration](#) portion of this guide.