

MorphoManager

BioBridge

Honeywell Pro-Watch

Quick Start Guide



Table of Contents

Introduction.....	3
Support.....	3
Setting up BioBridge.....	4
Wiegand Profiles.....	4
Biometric Device Profile.....	5
Biometric Device(s).....	6
User Policy.....	7
User Distribution Groups.....	8
BioBridge System Configuration.....	9
Using the BioBridge Enrollment Client.....	12
Toolbar.....	12
Enroll.....	12
Edit.....	13
Encode Card.....	13
Filter.....	13
Refresh.....	13
Search Field.....	14
Data Grid.....	14

Introduction

BioBridge is an enrollment and synchronization middleware that overlays enrollment and demographic synchronization between MorphoManager and third party data sources. The infrastructure is extensible and supports interfacing to multiple third party systems (one at a time) by the implementation of an interface. BioBridge is not dependent on the underlying technology platform required for integration.

BioBridge supports the following version of Honeywell Pro-Watch:

- 4.2.0.10765

Support

Please contact your installer for additional support.

Setting up BioBridge

The following areas of MorphoManager will need to be configured as part of the Honeywell Pro-Watch BioBridge setup:

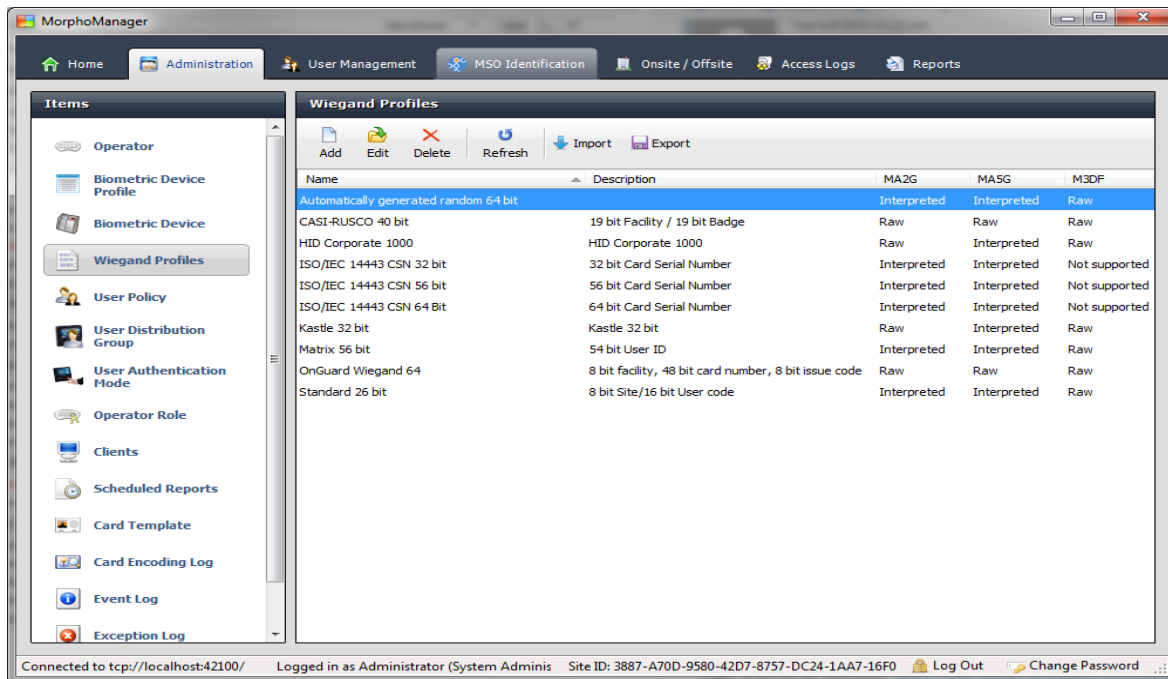
1. Wiegand Profiles
2. Biometric Device Profiles
3. Biometric Device
4. User Policy
5. User Distribution Group
6. BioBridge System Configuration

Wiegand Profiles

Wiegand Profiles define what information is output over the Wiegand Out interface of the Morpho Biometric Devices when a user is identified. This is most typically used in conjunction with an Access Control System.

- From Administration tab select Wiegand Profile.
- Click **Add** button to create a custom Wiegand profile.

The Wiegand formatting used can vary from system to system, but some common formats are listed below.



The actual setting of the Wiegand Profile from this list will be done at the User Group and Biometric Device Profile Level. Please refer to those sections for further details.

Biometric Device Profile

The Biometric Device Profile will define common settings and parameters for one or more biometric devices. This profile can be applied when adding units into the system from the Biometric Device section of Administration.

- From Administration tab select Biometric Device Profile.
- Click **Add** button to create a new Biometric Device Profile.

In order to create the most basic profile utilizing biometrics stored on the devices that can be used, simply give the profile a name and click **Finish**. Please reference the MorphoManager User Manual for more detail on all the various properties that can be assigned to a Biometric Device Profile including the use of smartcards.



If you plan on using a Wiegand Profile, you will need to set the Wiegand Profile for the Biometric Device(s) here. The Wiegand Profile you choose for your devices must marry to the one being utilized for your users set in the User Group section of this guide.

Biometric Device(s)

A Biometric Device is the device used to verify users and allow access to doors. They record a log of every attempt to gain access. MorphoManager is used to manage user’s access to Biometric Devices.

- From Administration select Biometric Device.
- Click **Add** to create a new Biometric Device.
- Enter the details for the device including the Hardware Family the device falls into, the IP address, and the Biometric Device Profile you wish to utilize.

- Once the required details are entered click **Finish**.

Below is a screenshot of how the Biometric Device Screen looks after the configuration and the devices are online.

Name	Description	Location	Biometric D...	Status	Tasks
MA sigm Multi			Default	Online	0

MA sigm Multi

Description:

Hardware Type: MA SIGMA Multi

Serial Number: 1431SMS0000243

Firmware version: 1.3.2

Hostname/IP Address: 10.10.214.11:11010

User Slots: 0 / 3000

Time Zone: (UTC-05:00) Eastern Time (US Canada)

Device Status: Online

User Policy

User policies are used to apply access rights and rules to all members of the group.

To Configure BioBridge, MorphoManager's UserPolicy with an Access Mode "Per User" must be selected.

This will create User Distribution Groups (groups of Biometric Devices) that can place the enrolled user into specific devices.

- From Administration tab select User Policy.
- Click **Add** button to create a new User Policy.

Adding User Policy

Enter the details for this User Policy

Name:

Description:

Access Mode: All Biometric Devices and Clients ▾

Allow MA 500 database selection during user enrollment

Time Mask Mode: 24 Hours, 7 Days a Week ▾

Extended User Details: Display extended user details

Wiegand Profile: Automatically generated random 64 t ▾

User Authentication Mode: Biometric (1:Many) ▾

Wave Enrollment Minimum Hands: None ▾

Finger Biometric Enrollment Minimum Fingers: Two ▾

Preferred Finger One: Left Index Finger ▾

Preferred Finger Two: Right Index Finger ▾

Preferred Duress Finger: Left Middle Finger ▾

Show Photo Capture Page:

Show Wave Biometric Capture Page:

Show Finger Biometric Capture Page: (User Authentication Mode requires templates)



If you plan on using a Wiegand Profile, you will need to set it here in order for the users enrolled in this User Group to have a particular Wiegand Profile. The Wiegand Profile you choose for your users must marry to the one you utilize for your biometric access devices set in the Biometric Device Profile section of this guide.

The default User Policy will be set to utilize an authentication mode of Biometric (1: Many). To utilize another authentication mode (such as encoding smartcards) additional User Policies can be created.

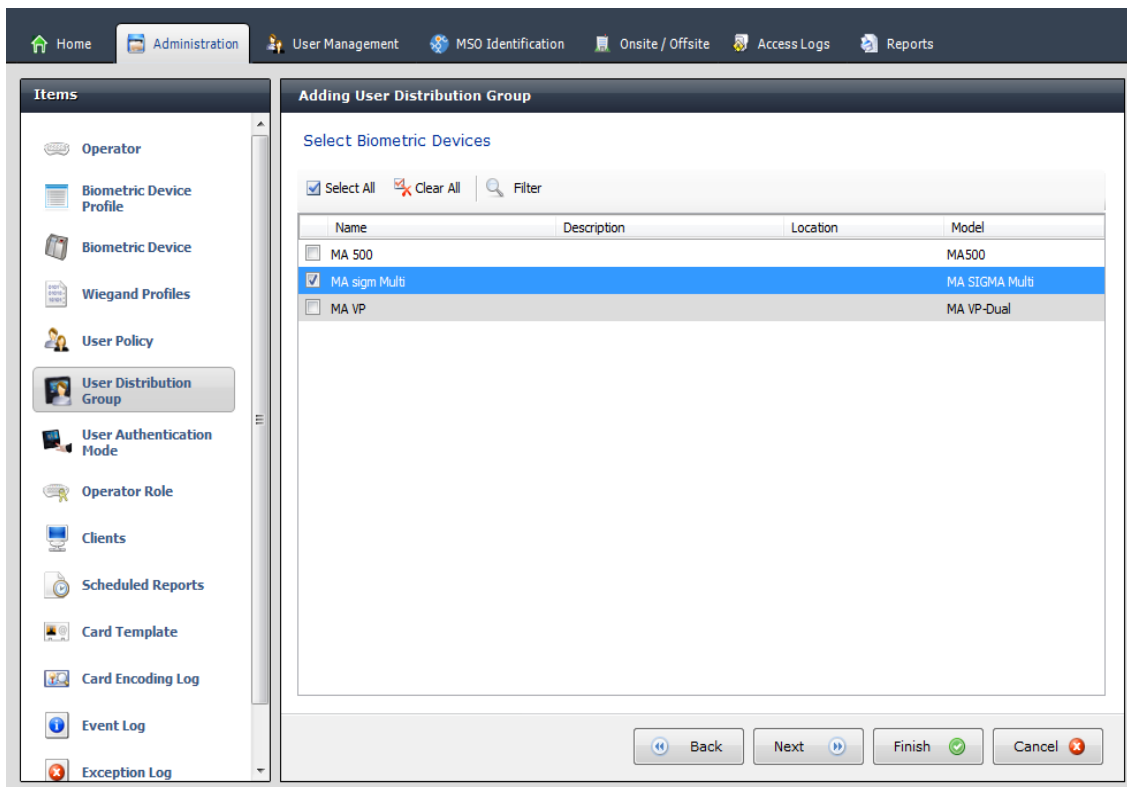
Please reference the MorphoManager User Manual for more detail on all the various properties that can be assigned to a User Policy including Wiegand Profile, Finger Biometric Enrollment Minimum, Fingers, Access Modes and User Authentication Modes.

User Distribution Groups

User Distribution Groups are designed to distribute users onto groups of MA readers or MorphoManager Clients. In order to be utilized the user must be in a User Policy that has its Access Mode set to “Per User”. Then the User Distribution Groups will be selectable when creating (or editing) a user.

- From Administration tab select User Distribution Group.
- Click **Add** button to create a new User Distribution Group.

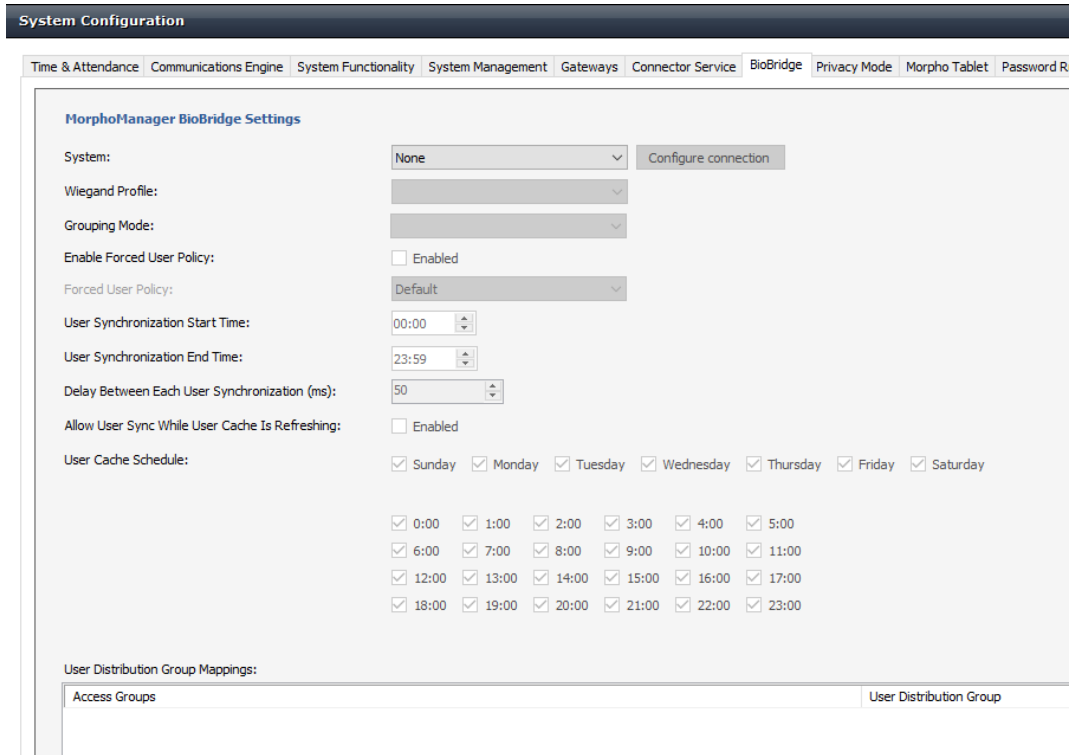
Below is the screenshot where group will only be placing users on one of the three devices installed on the system.



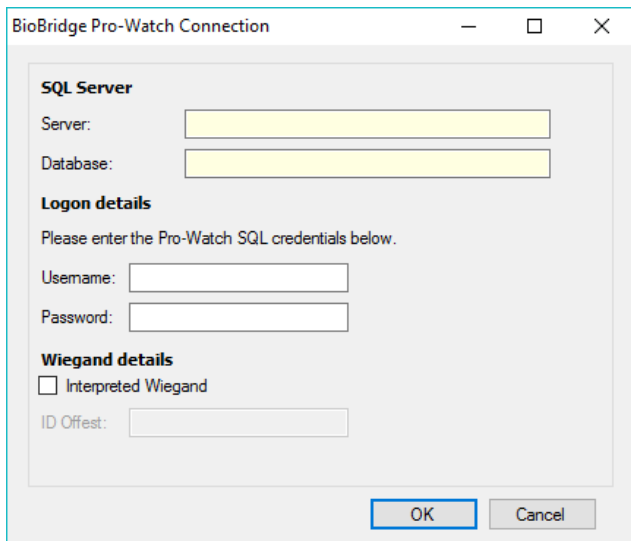
BioBridge System Configuration

The last step in the process is to configure BioBridge specifications to Pro-Watch.

From Administration, select System Configuration.
 Select the BioBridge Tab in System Configuration.



System: From the System drop down menu choose Pro-Watch and click the **Configure connection** button. A BioBridge connection box window will pop up. Fill in all the required fields and click OK.



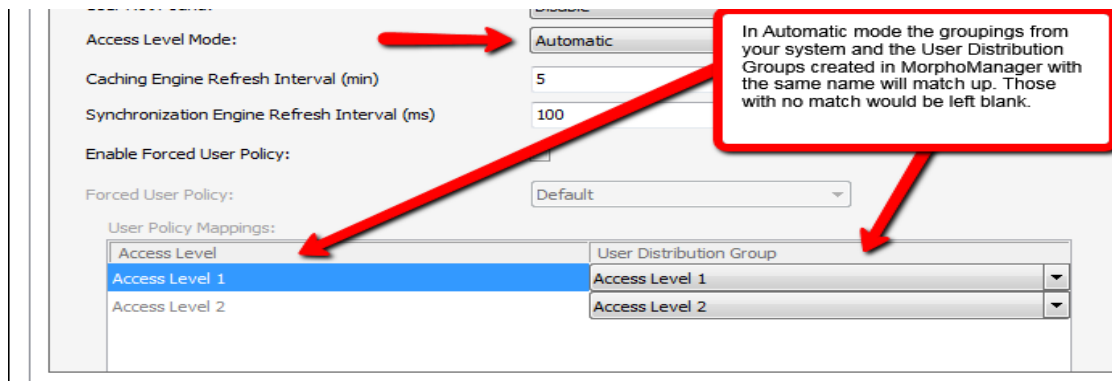
BioBridge Pro-Watch connection dialog:

- **Server:** The SQL server instance name that is running the Honeywell Pro-Watch database
- **Database:** The name of the Honeywell Pro-Watch database
- **Username:** The SQL username that has access to the Pro-Watch database
- **Password:** The SQL password that corresponds with the SQL username
- **Interpreted Wiegand:** Enables the interpreted wiegand function. MorphoManager will take the ID Offset into account when interpreting the wiegand ID from the Pro-Watch database
- **ID Offset:** The decimal offset for wiegand interpretation. This value can be found from the Pro-Watch settings. The only permitted values are factors of 10 (10, 100, 1000, 10,000 etc)

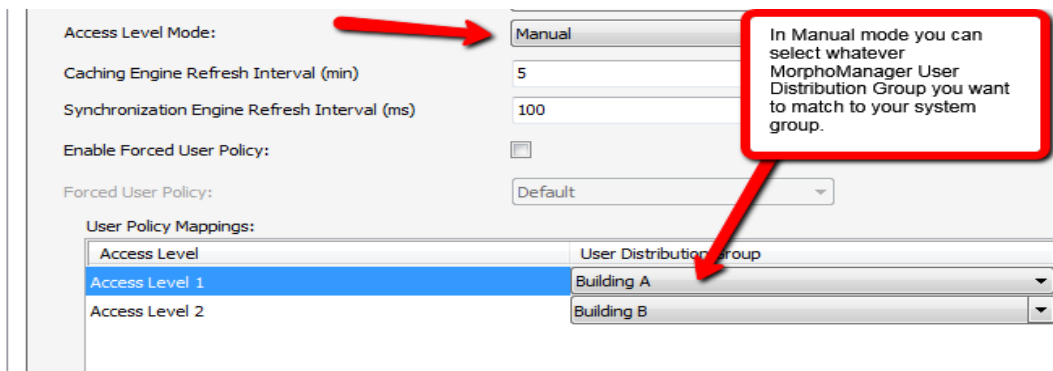
Wiegand Profile: Select the Wiegand format in use from the drop down menu.

Grouping Level Mode: This setting determines how MorphoManager should map Pro-Watch users into MorphoManager User Distribution Groups.

Automatic: This mode will automatically match Access Level groups from Pro-Watch to the ones created in MorphoManager User Distribution Group if they have the same naming convention.



Manual: If the Access Level grouping names of Pro-Watch and the User Distribution Group(s) created in MorphoManager are not the same, then selecting which Pro-Watch Access Level maps to which MorphoManager User Distribution Group can be done manually in the User Policy Mappings.



For basic setups, the following settings do not require any changes:

Enable Forced User Policy

By activating this feature, you can select a User Policy from the drop down menu. The 3rd party user will automatically be placed in this User Policy during the enrollment process started in the BioBridge Enrollment Client. The User Policy selected here must be a “Per User” access mode policy.

User Synchronization Start Time and End Time

The user synchronization engine will only be permitted to run in this time frame.

Delay between Each User Synchronization

The duration that the User Synchronization Engine will sleep between each user sync. Increase the delay time to use less system resources, but this will also extend the time it takes for all the users to be updated.

Allow User Sync While User Cached Is Refreshing

When enabled, the User Synchronization engine will run in parallel to the User Cache Refresh. This is very taxing on system resources. It is recommended to disable this setting when using large databases.

User Cache Refresh Schedule

The specified times when the user cache refresh may start. The ideal schedule would be 24/7, but this is not always possible with large databases.

Using the BioBridge Enrollment Client

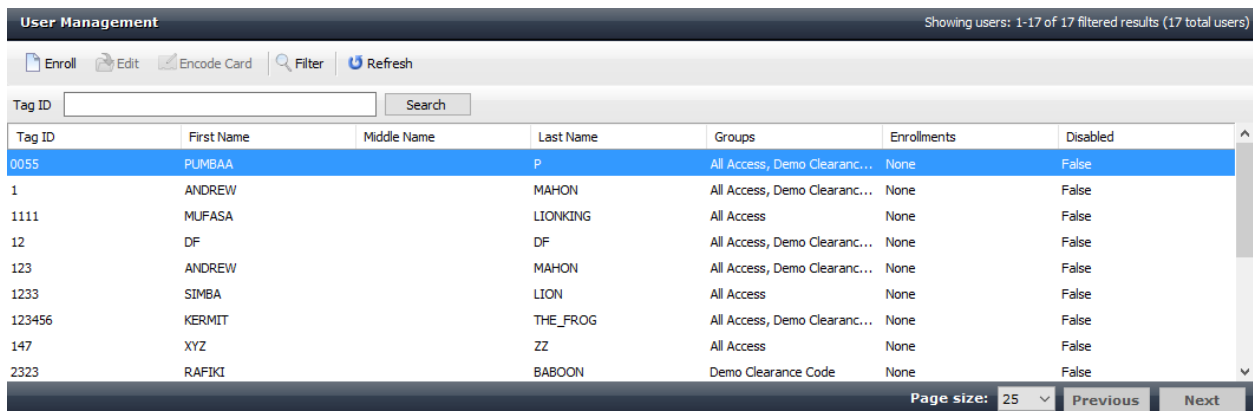
After configuring BioBridge you will now utilize the BioBridge Enrollment Client. This client will check if BioBridge Integration has been enabled and configured. If it is has not the application will display the message “BioBridge integration has not been enabled and configured” and you will need to go back to MorphoManager/Administration/System Configuration/BioBridge to configure it properly.

If BioBridge integration is configured the application will display a user management screen. The screen will consist of a toolbar and a data grid.

Toolbar

The toolbar will have the following items:

- Enroll
- Edit
- Encode Card
- Filter
- Refresh
- Search Field



Tag ID	First Name	Middle Name	Last Name	Groups	Enrollments	Disabled
0055	PUMBAA		P	All Access, Demo Clearanc...	None	False
1	ANDREW		MAHON	All Access, Demo Clearanc...	None	False
1111	MUFASA		LIONKING	All Access	None	False
12	DF		DF	All Access, Demo Clearanc...	None	False
123	ANDREW		MAHON	All Access, Demo Clearanc...	None	False
1233	SIMBA		LION	All Access	None	False
123456	KERMIT		THE_FROG	All Access, Demo Clearanc...	None	False
147	XYZ		ZZ	All Access	None	False
2323	RAFIKI		BABOON	Demo Clearance Code	None	False

Enroll

Enroll will start the enrollment of the selected user. The enrollment process will be derived from the standard MorphoManager user add/edit wizard with the following pages (For details on the enrollment process please see the User Management section of the MorphoManager User Manual):

- Authentication Type (Only if more than one mode is configured)
- 3D Face Selection
- 3D Face Enrollment
- Finger Selection
- Finger Enrollment
- MorphoWave Selection
- MorphoWave Enrollment

If a card based authentication method is configured the operator will be prompted if they want to encode a card.

Edit

Opens the already enrolled user details for viewing or editing.

Encode Card

Encode card will display an animation of the card being presented to a card reader and wait for the card encoding to complete or be cancelled.

Filter

The screenshot displays a user filter interface with the following sections:

- User Details:** Includes input fields for First Name, Middle Name, Last Name, Tag ID, and Date of Birth. An 'Enabled' section has radio buttons for 'Any' (selected), 'Enable', and 'Disable'.
- Groups:** Features 'Select All' and 'Clear All' buttons. A list of groups is shown with checkboxes: 'All Access' (checked) and 'Demo Clearance Code' (unchecked).
- User Wiegand Values:** A single input field containing the text 'Not Applicable'.
- Sort By:** Three dropdown menus for 'Primary', 'Secondary', and 'Tertiary' sorting. The 'Primary' dropdown is set to 'Not Applicable Ascending', 'Secondary' to 'Last Name Ascending', and 'Tertiary' to 'First Name Ascending'.

Filter will show a popup inline form that allows filtering on the following items:

- First Name
- Middle Name
- Last Name
- Tag ID
- Date of Birth
- Enabled/Disabled
- Groups

Refresh

Refresh will update the data currently being shown using the currently set filter conditions.

Search Field

The Search Field can be used to find individual users quickly and/or to migrate users from Honeywell Pro-Watch to the BioBridge Enrollment Client without waiting for a cache refresh.

Data Grid

The data shown in the data grid is a combination of your system and MorphoManager. Only users that exist in your system will be shown. A MorphoManager user does not exist until the user is enrolled. By default pagination is set for the first 25 BioBridge users to be shown. Operators may change the pagination to 25, 50, 100 & 250.

The data grid will have the following columns:

- Tag ID
- First name
- Middle Name
- Last name
- Groups – All of the groups that your user is a member of in your system.(Comma separated values)
- Enrollments (None, Finger, Finger & 3D Face, 3D Face, MorphoWave) (Derived from linked MorphoManager User)
- Disabled- A value of either True or False will be present.

The screenshot displays the 'User Management' interface. At the top, it shows 'Showing users: 1-17 of 17 filtered results (17 total users)'. Below this is a toolbar with 'Enroll', 'Edit', 'Encode Card', 'Filter', and 'Refresh' buttons. A search field is present with the text 'Tag ID' and a 'Search' button. The main data grid has the following columns: Tag ID, First Name, Middle Name, Last Name, Groups, Enrollments, and Disabled. The row for Tag ID 123 is highlighted in blue. Below the grid, there are 'Page size: 25', 'Previous', and 'Next' buttons. At the bottom, there is a 'Details' panel with tabs for 'Details', 'Logs', and 'Biometrics'. The 'Details' tab is active, showing a message: 'User has not been enrolled in MorphoManager.' Below this message are fields for 'Date of Birth', 'Authentication', 'User Policy', and 'Disabled'. There are also 'Export Photo' and 'Add Photo' buttons at the bottom of the details panel.

Tag ID	First Name	Middle Name	Last Name	Groups	Enrollments	Disabled
0055	PUMBAA		P	All Access, Demo Clearanc...	None	False
1	ANDREW		MAHON	All Access, Demo Clearanc...	None	False
1111	MUFASA		LIONKING	All Access	None	False
12	DF		DF	All Access, Demo Clearanc...	None	False
123	ANDREW		MAHON	All Access, Demo Clearanc...	None	False
1233	SIMBA		LION	All Access	None	False
123456	KERMIT		THE_FROG	All Access, Demo Clearanc...	None	False
147	XYZ		ZZ	All Access	None	False
2323	RAFIKI		BABOON	Demo Clearance Code	None	False

Enrolled user will show their MorphoManager details in the “Show Details” panel below the data grid. This area will be blank if the user has not been enrolled.