

# MorphoManager

---

## BioBridge

Controlsoft Lite and Pro

Quick Start Guide

---



## Table of Contents

Introduction.....	3
Support.....	3
Setting up BioBridge.....	4
Wiegand Profiles.....	4
Biometric Device Profile.....	5
Biometric Device(s).....	6
User Policy.....	7
User Distribution Groups.....	8
BioBridge System Configuration.....	9
Using the BioBridge Enrollment Client.....	10
Toolbar.....	10
Enroll.....	10
Edit.....	11
Encode Card.....	11
Filter.....	11
Refresh.....	11
Search Field.....	12
Data Grid.....	12

## Introduction

BioBridge is an enrollment and synchronization middleware that overlays enrollment and demographic synchronization between MorphoManager and third party data sources. The infrastructure is extensible and supports interfacing to multiple third party systems (one at a time) by the implementation of an interface. BioBridge is not dependent on the underlying technology platform required for integration.

## Support

Please contact your installer for additional support.

## Setting up BioBridge

The following areas of MorphoManager need to be configured as part of the Controlsoft BioBridge setup:

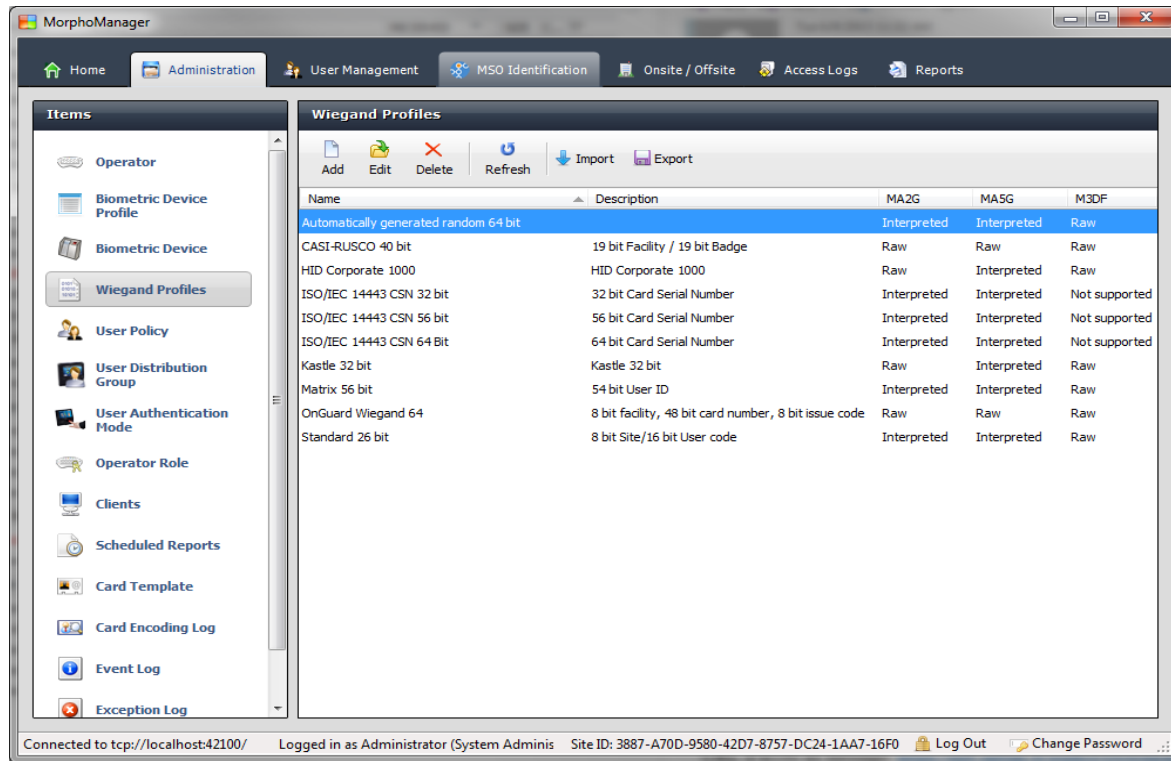
1. Wiegand Profiles
2. Biometric Device Profiles
3. Biometric Device
4. User Policy
5. User Distribution Group
6. BioBridge System Configuration


### Wiegand Profiles

Wiegand Profiles define what information is output over the Wiegand Out interface of the Morpho Biometric Devices when a user is identified. This is most typically used in conjunction with an Access Control System.

- From Administration tab select Wiegand Profile.
- Click **Add** button to create a custom Wiegand profile.

The Wiegand formatting used can vary from system to system, but some common formats are listed below.



 The actual setting of the Wiegand Profile from this list will be done at the User Group and Biometric Device Profile Level. Please refer to those sections for further details.

## Biometric Device Profile

The Biometric Device Profile will define common settings and parameters for one or more biometric devices. This profile can be applied when adding units into the system from the Biometric Device section of Administration.

- From Administration tab select Biometric Device Profile.
- Click **Add** button to create a new Biometric Device Profile.

The screenshot shows the 'Adding Biometric Device Profile' web interface. The top navigation bar includes 'Home', 'Administration', 'User Management', 'MSO Identification', 'Onsite / Offsite', 'Access Logs', and 'Reports'. The left sidebar lists various system components, with 'Biometric Device Profile' highlighted. The main content area is titled 'Adding Biometric Device Profile' and contains the following fields and controls:

- Name:** A text input field.
- Description:** A text input field.
- Configuration Mode:** A dropdown menu set to 'Express'.
- Wiegand Profile:** A dropdown menu set to 'Automatically generated random 64 bit'.
- Realtime logging enabled:** A checkbox that is currently unchecked.
- Log retrieval interval:** A text input field set to '300' with '(seconds)' to its right.
- Language:** A dropdown menu set to 'English'.
- Display name encoding code page:** A dropdown menu set to 'Western Europe (Default) (ISO-8859-1)' with '(Applicable to MA500 series only)' to its right.
- Duplicate check on biometrics:** A checkbox that is currently unchecked, with a note below it: '(MA 100, MA J, MA 500, MA VP and MA Sigma only. Only applicable to new user adds or rebuild operations)'. The note is only visible when the checkbox is checked.
- MorphoAccess heartbeat interval:** A text input field set to '30' with '(seconds)' to its right.

At the bottom of the form are four buttons: 'Back', 'Next', 'Finish' (with a green checkmark icon), and 'Cancel' (with a red X icon).

In order to create the most basic profile utilizing biometrics stored on the devices that can be used, simply give the profile a name and click **Finish**. Please reference the MorphoManager User Manual for more detail on all the various properties that can be assigned to a Biometric Device Profile including the use of smartcards.



If you plan on using a Wiegand Profile, you will need to set the Wiegand Profile for the Biometric Device(s) here. The Wiegand Profile you choose for your devices must marry to the one being utilized for your users set in the User Group section of this guide.

## Biometric Device(s)

A Biometric Device is the device used to verify users and allow access to doors. They record a log of every attempt to gain access. MorphoManager is used to manage user's access to Biometric Devices.

- From Administration tab select Biometric Device.
- Click **Add** button to create a new Biometric Device.
- Enter the details for the device including the Hardware Family the device falls into, the IP address, and the Biometric Device Profile.

**Editing Biometric Device**

Enter the details for this Biometric Device

Name: MA sigm Multi

Description:

Location:

Asset ID:

Export Value:

Time Zone: (UTC-05:00) Eastern Time (US & Canada)

Hardware Family: MA Sigma

Hostname\IP Address: 10.10.214.11

Port: 11010

Biometric Device Profile: Default

Include in Time & Attendance Exports:

Change User Onsite / Offsite Status:

Onsite Key: No Key

Offsite Key: No Key

Back Next Finish Cancel

- Once the required details are entered click **Finish**.
- Below is a screenshot of how the Biometric Device Screen looks after the configuration and the devices are online.

**Biometric Device**

Add Edit Delete Refresh Get Logs Set Date/Time Rebuild Set Offline

Name	Description	Location	Biometric D...	Status	Tasks
MA sigm Multi			Default	Online	0

Details Logs Queued Tasks (0) Failed Tasks (0) Hide Details

**MA sigm Multi**

**Description:**

**Hardware Type:** MA SIGMA Multi

**Serial Number:** 1431SMS0000243

**Firmware version:** 1.3.2

**Hostname\IP Address:** 10.10.214.11:11010

**User Slots:** 0 / 3000

**Time Zone:** (UTC-05:00) Eastern Time (US Canada)

**Device Status:** Online

## User Policy

User policies are used to apply access rights and rules to all members of the group.

To Configure BioBridge, MorphoManager's UserPolicy with an Access Mode "**Per User**" must be selected. This will create User Distribution Groups (groups of Biometric Devices) that can place the enrolled user into specific devices.

- From Administration tab select User Policy.
- Click **Add** button to create a new User Policy.

### Enter the details for this User Policy

Name:	<input type="text" value="ID Only"/>
Description:	<input type="text"/>
Access Mode:	<input type="text" value="Per User"/> <input type="checkbox"/> Allow MA 500 database selection during user enrollment
Time Mask Mode:	<input type="text" value="24 Hours, 7 Days a Week"/>
Extended User Details:	<input type="checkbox"/> Display extended user details
Wiegand Profile:	<input type="text" value="Standard 26 bit"/>
User Authentication Mode:	<input type="text" value="Identifier Only"/>
Finger Biometric Enrollment Minimum Fingers:	<input type="text" value="Two"/>
Preferred Finger One:	<input type="text" value="Left Index Finger"/>
Preferred Finger Two:	<input type="text" value="Right Index Finger"/>
Preferred Duress Finger:	<input type="text" value="Left Middle Finger"/>



If you plan on using a Wiegand Profile, you will need to set it here in order for the users enrolled in this User Group to have a particular Wiegand Profile. The Wiegand Profile you choose for your users must marry to the one you utilize for your biometric access devices set in the Biometric Device Profile section of this guide.

The default User Policy will be set to utilize an authentication mode of Biometric (1: Many). To utilize another authentication mode (such as encoding smartcards) additional User Policies can be created.

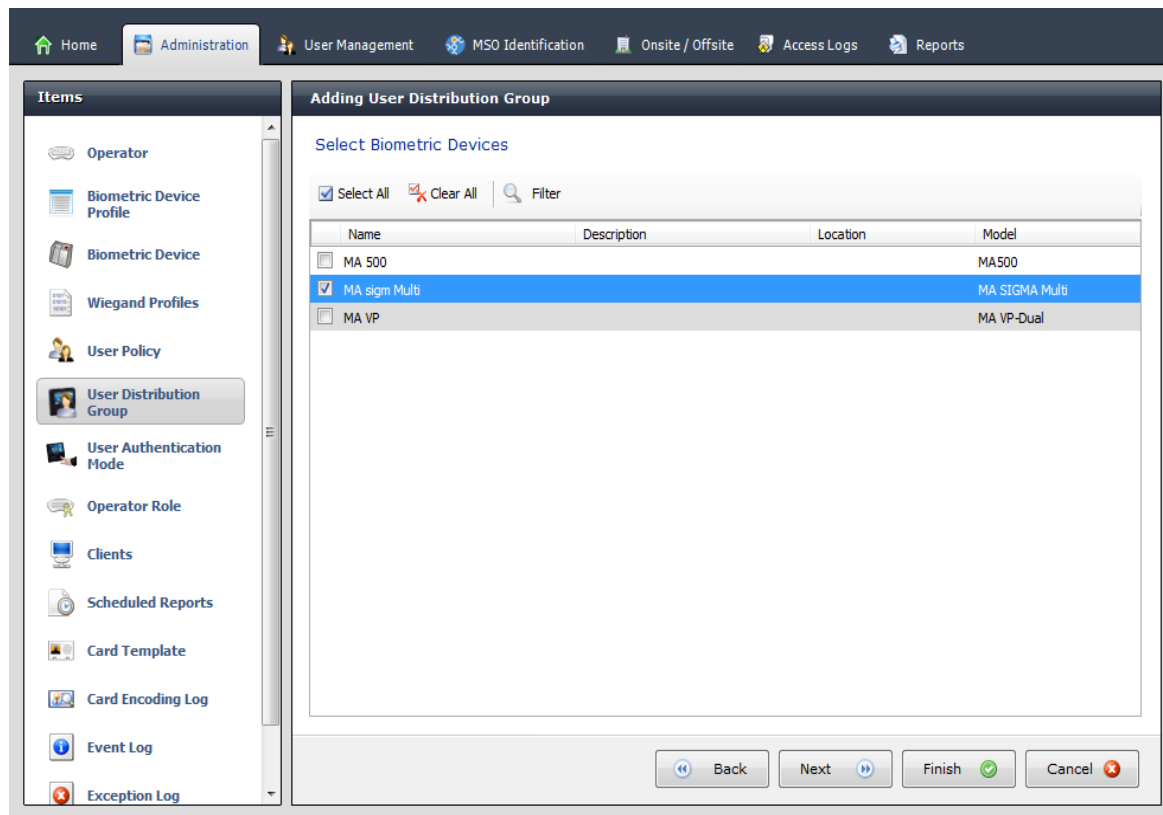
Please reference the MorphoManager User Manual for more detail on all the various properties that can be assigned to a User Policy including Wiegand Profile, Finger Biometric Enrollment Minimum, Fingers, Access Modes and User Authentication Modes.

## User Distribution Groups

User Distribution Groups are designed to distribute users onto groups of MA readers or MorphoManager Clients. In order to be utilized the user must be in a User Policy that has its Access Mode set to “Per User”. Then the User Distribution Groups will be selectable when creating (or editing) a user.

- From Administration tab select User Distribution Group.
- Click **Add** button to create a new User Distribution Group.

Below is the screenshot where group will only be placing users on one of the three devices installed on the system.

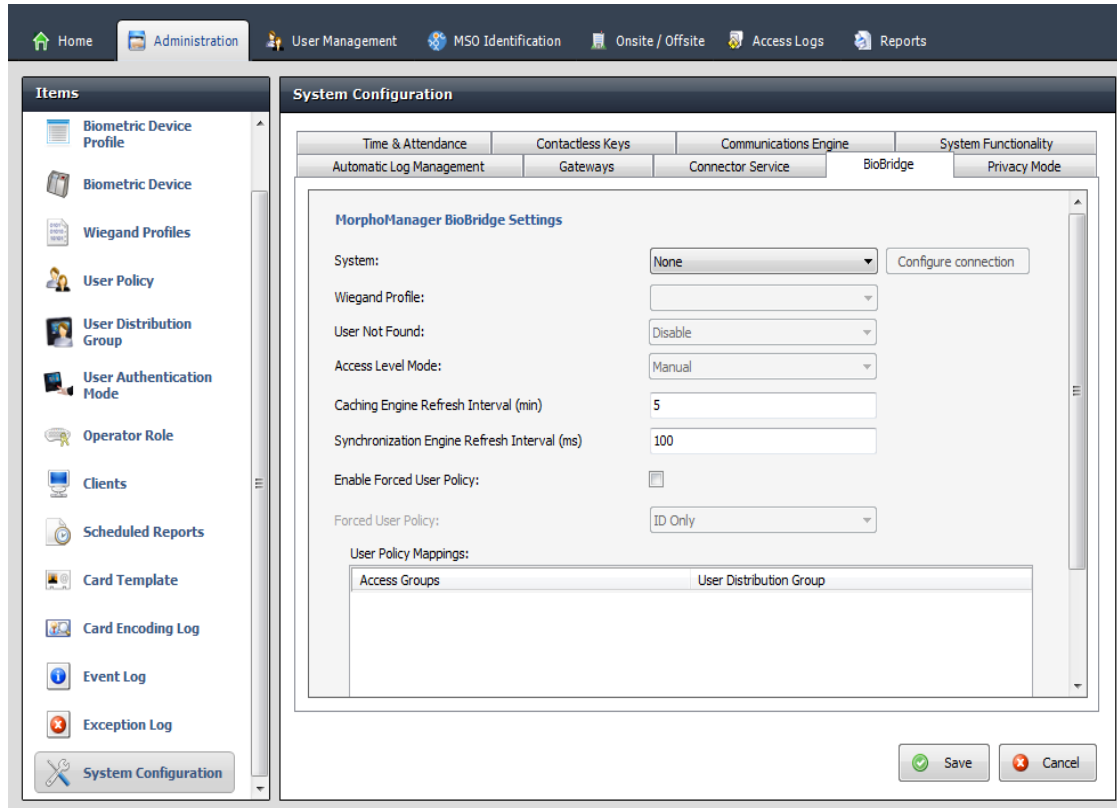




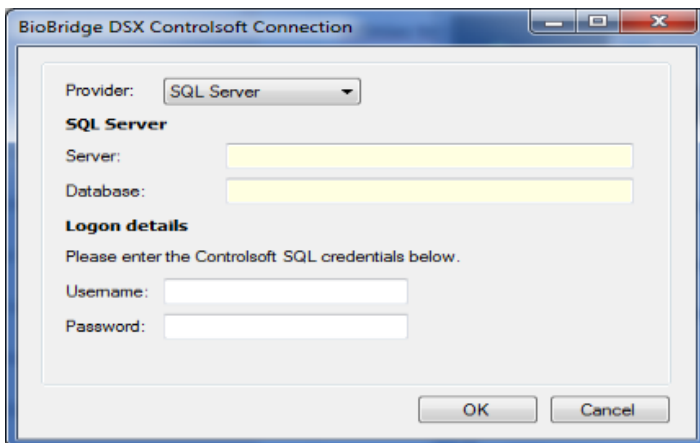
## BioBridge System Configuration

The last step in the process is to configure BioBridge specifications to Controlsoft Lite and Pro.

- From Administration, select System Configuration.
- Select the BioBridge Tab in System Configuration.



- **System:** From the System drop down menu choose Controlsoft Lite and Pro and click the **Configure connection** button. A BioBridge connection box window will pop up. Fill in all the required fields and click OK.



**For Controlsoft Pro utilize the Provider of SQL Server.**

**For Controlsoft Lite utilize the Provider of Microsoft Access.**

## Using the BioBridge Enrollment Client

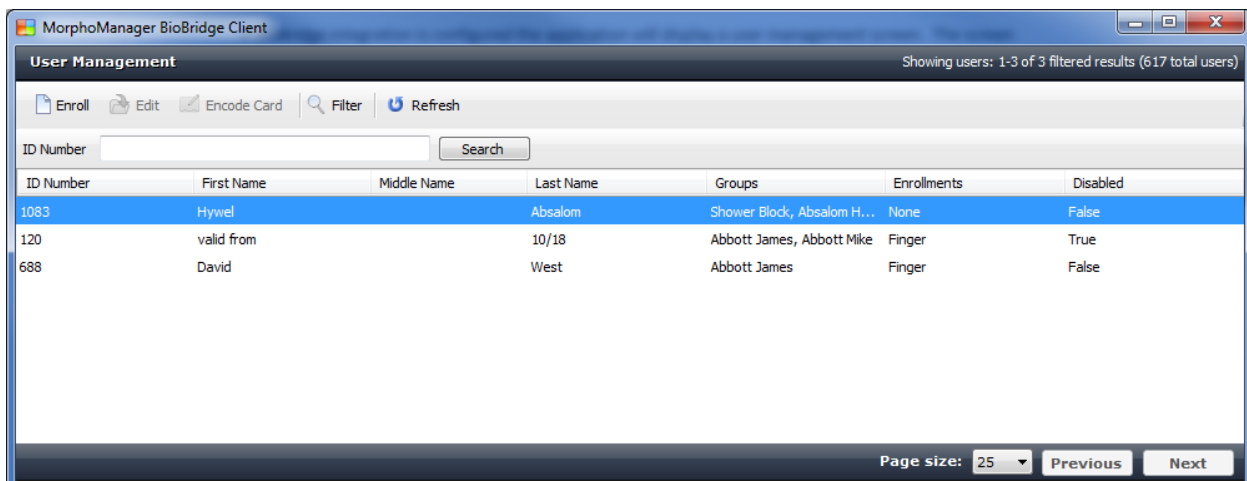
After configuring BioBridge you will now utilize the BioBridge Enrollment Client. This client will check if BioBridge Integration has been enabled and configured. If it is has not, the application will display the message “BioBridge integration has not been enabled and configured” and you will need to go back to MorphoManager/Administration/System Configuration/BioBridge to configure it properly.

If BioBridge integration is configured the application will display a user management screen. The screen will consist of a toolbar and a data grid.

### Toolbar

The toolbar will have the following items:

- Enroll
- Edit
- Encode Card
- Filter
- Refresh
- Search Field



### Enroll

Enroll will start the enrollment of the selected user. The enrollment process will be derived from the standard MorphoManager user add/edit wizard with the following pages (For details on the enrollment process please see the User Management section of the MorphoManager User Manual):

- Authentication Type (Only if more than one mode is configured)
- 3D Face Selection
- 3D Face Enrollment
- Finger Selection
- Finger Enrollment

If a card based authentication method is configured the operator will be prompted if they want to encode a card.

## Edit

Opens the already enrolled user details for viewing or editing.

## Encode Card

Encode card will display an animation of the card being presented to a SDI 011 and wait for the card encoding to complete or be cancelled.

## Filter

The screenshot displays a web interface for filtering users. It is divided into several sections:

- User Details:** Contains input fields for First Name, Middle Name, Last Name, ID Number, and Date of Birth. Below these is an 'Enabled' section with three radio buttons: 'Any' (selected), 'Enabled', and 'Disabled'.
- User Wiegand values:** A section with the text 'Not Applicable' and an empty input field.
- Groups:** A list of groups with checkboxes. At the top are 'Select All' and 'Clear All' buttons. The groups listed are: Abbott James (checked), Abbott Mike (checked), Absalom Hywel (checked), Acheson Kenneth (checked), Adam Jonathan (checked), and Adams Kerry (checked).
- Sort By:** Three dropdown menus for sorting: Primary (ID Number Ascending), Secondary (Last Name Ascending), and Tertiary (First Name Ascending).

Filter will show a popup inline form that allows filtering on the following items:

- First Name
- Last Name
- ID Number
- Enabled/Disabled
- Group

## Refresh

Refresh will update the data currently being shown using the currently set filter conditions.

## Search Field

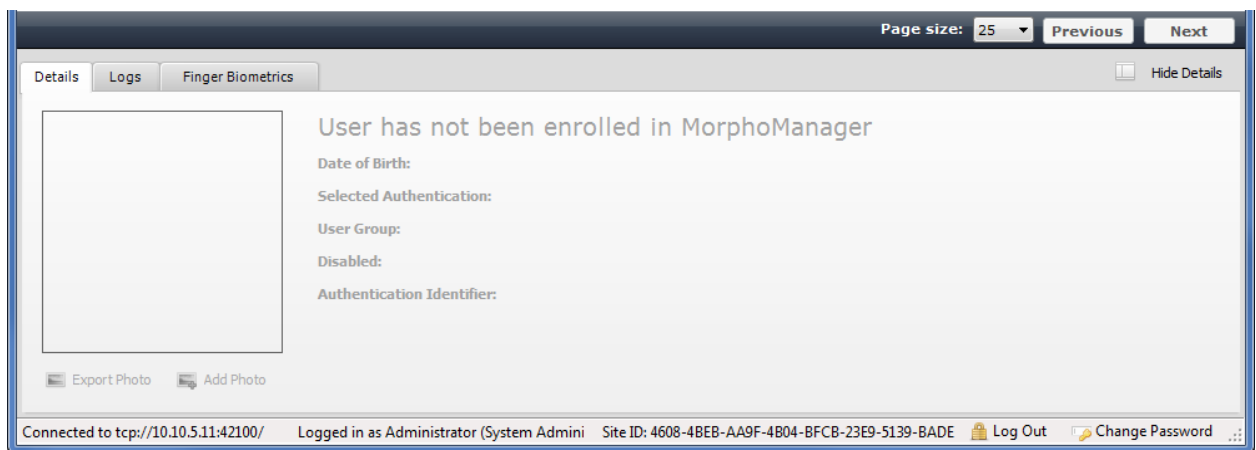
The Search Field can be used to find individual users quickly and/or to migrate users from Controlsoft to the BioBridge Enrollment Client without waiting for a cache refresh.

## Data Grid

The data shown in the data grid is a combination of your system and MorphoManager. Only users that exist in your system will be shown. A MorphoManager user does not exist until the user is enrolled. By default pagination is set for the first 25 BioBridge users to be shown. Operators may change the pagination to 25, 50, 100 & 250.

The data grid will have the following columns:

- ID Number
- First name
- Last name
- Groups – All of the groups that your user is a member of in your system.(Comma separated values)
- Enrollments (None, Finger, Finger & 3D Face, 3D Face) (Derived from linked MorphoManager User)
- Disabled- A value of either True or False will be present.



Enrolled user will show their MorphoManager details in the “Show Details” panel below the data grid. This area will be blank if the user has not been enrolled.